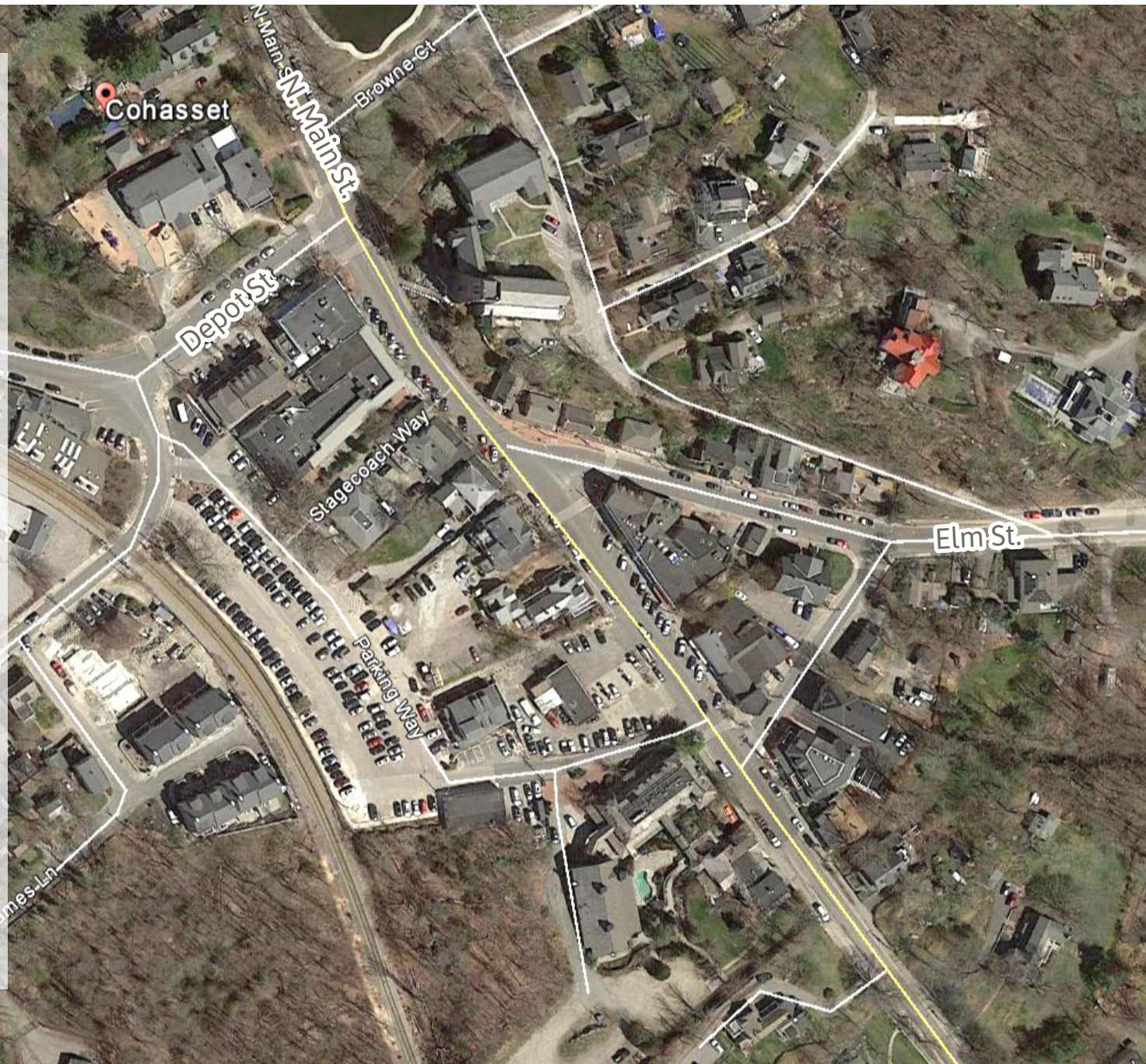


Coahasset Center

Elements to notice

- Types of uses
- Parking organization for visitors and retailers
- Street widths
- Street intersections
- Curb cuts
- Sidewalks
- Type of materials used in the sidewalks, streets, intersections
- Street landscape and street trees - Organization, how does it help retailers and pedestrians?
- Types of open spaces and their orientation
- Street furniture
- Spaces between buildings
- Building facades
- Activity on sidewalks and in-between spaces
- Shop timings



Hingham Center

Elements to notice

- Types of uses
- Parking organization for visitors and retailers
- Street widths
- Street intersections
- Curb cuts
- Sidewalks
- Type of materials used in the sidewalks, streets, intersections
- Street landscape and street trees - Organization, how does it help retailers and pedestrians?
- Types of open spaces and their orientation
- Street furniture
- Spaces between buildings
- Building facades
- Activity on sidewalks and in-between spaces
- Shop timings



Market Square, Newburyport

Elements to notice

- Traffic pattern
- Types of uses
- Parking organization for visitors and retailers
- Street widths
- Street intersections
- Curb cuts
- Sidewalks
- Type of materials used in the sidewalks, streets, intersections
- Street landscape and street trees - Organization, how does it help retailers and pedestrians?
- Types of open spaces and their orientation
- Street furniture
- Spaces between buildings
- Building facades
- Activity on sidewalks and in-between spaces
- Shop timings



Downtown Marblehead

Elements to notice

- Types of uses
- Parking organization for visitors and retailers
- Street widths
- Street intersections
- Curbcuts
- Sidewalks
- Activity on sidewalks and inbetween spaces
- Type of materials used in the sidewalks, streets, intersections
- Street landscape and street trees - How it helps retailers and pedestrians
- Types of open spaces and their orientation
- Street furniture
- Spaces between buildings
- Building facades
- Shop timings

