

FEINBERG BOG ROAD, DUXBURY, MA

IF FOLLOWING GPS—USE 934 TEMPLE STREET

DUXBURY, MA

CONDOMINIUMS



*Feinberg Bog Townhomes in
Duxbury, MA*

Living area @ 1138 sf

Total sf @ 1890

2 Bedrooms, 1.5 Baths

*Granite counter, stainless steel
appliances, bamboo floors,
central air, propane heat,
Full basement, shed and off
street parking.*

For more information:

nbrowne@sshahabitat.org

or call 781-337-7744 x 10.



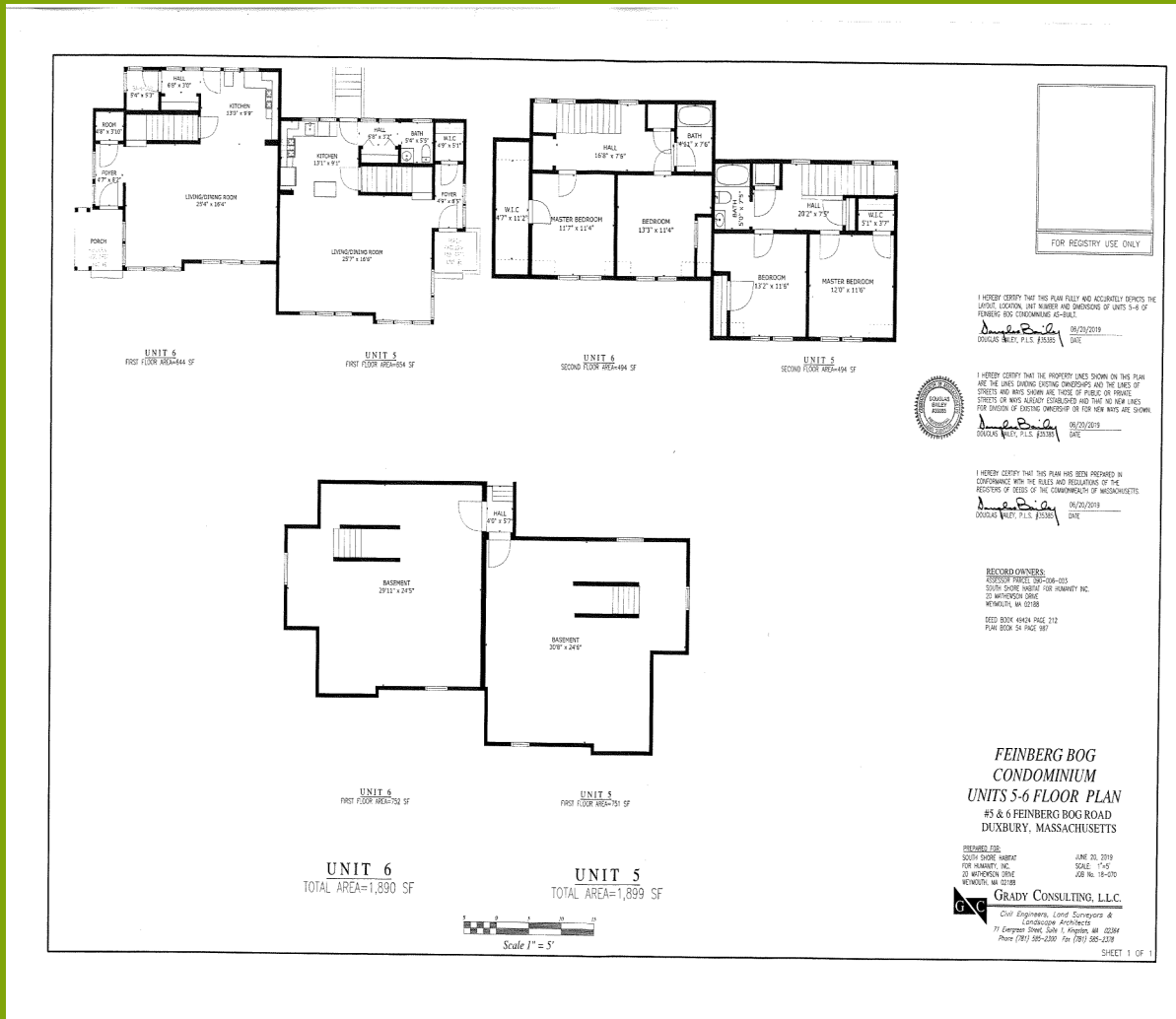


Homes are being offered by South Shore Habitat for Humanity in partnership with the Town of Duxbury Affordable Housing Trust. Qualified households earning less than 100% of the Area Median Income (adjusted for household size) have a unique opportunity to purchase an affordable home in Duxbury. Homes will be subject to a Deed Restriction that will govern the future sale of the home.

The maximum gross annual income allowed per household size are as follows:

- 1 person household \$83,000
- 2 person household \$94,800
- 3 person household \$106,700
- 4 person household \$118,500

This project was partially funded with Community Preservation Funds.



6 Feinberg Bog Road —\$310,000

3 Feinberg Bog Road —\$325,000

4 Feinberg Bog Road —\$325,000

Monthly condo fee estimated at \$221

Duxbury FY 2020 Taxes—14.66/1,000

All homes will be subject to a Deed Restriction.

Staging generously provided by ETHAN ALLEN

Some photos may be of similar homes in the community

For more information about these homes contact:

South Shore Habitat for Humanity

781-337-7744 x 10

nbrowne@sshabitat.org

Visit our website: www.sshabitat.org

