

DRAINAGE TEST HOLES

INFILTRATION SYS			BASIN 2		
DTP-1	9-8-22	16.6	DTP-2	9-8-22	16.1
0-42"	FILL	SL 10YR3/3	0-3"	FILL	SL 10YR3/3
42-44"	A	SL 10YR6/8	3-32"	A	SL 10YR6/8
44-55"	B	SL 2.5Y6/4	32-50"	B	SL 2.5Y6/4
55-78"	C	L 2.5Y5/6	50-63"	C1	SL 2.5Y5/3
WEEPING @ 65"(11.2)			MOTTLING @ 34" (ELEV=13.25)		
ADJ GND WTR ELEV=13.25					

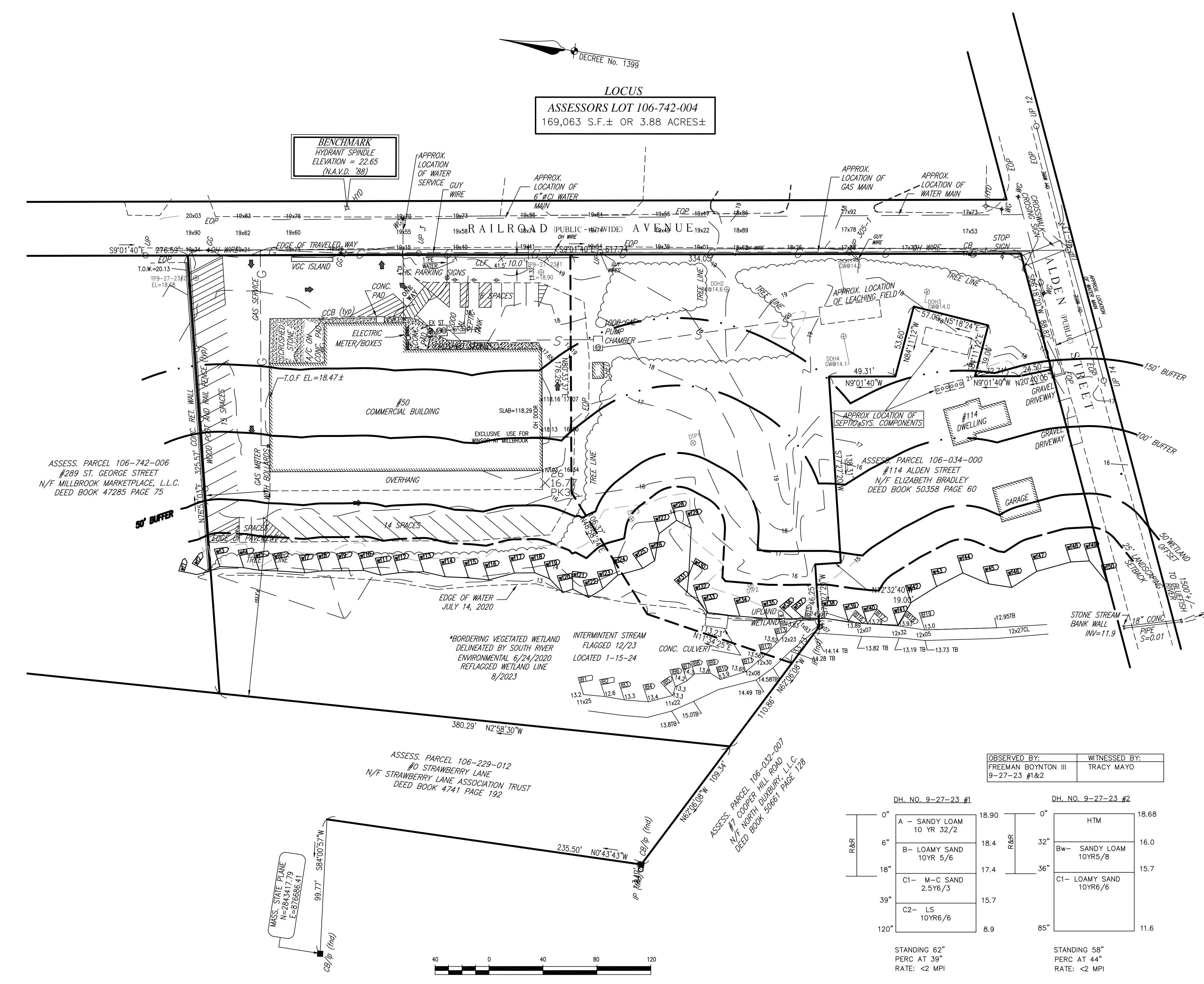
DEEP HOLES			BASIN 1		
TEST PIT #	PERFORMED BY:	DATE	DTP-3	9-8-22	15.5
1-3	WITNESSED BY: ROBERT CROWELL	9-8-22	0-36"	A	SL 10YR6/8
			36-52"	B	SL 2.5Y6/4
			50-63"	C1	SL 2.5Y5/6
			63-74"	C2	SL 2.5Y5/6
USE ELEV=13.25 FOR GND WTR FOR BASIN 2 & INFILTRATION SYS			WEEPING @ 37" (12.41)		
			MOTTLING @ 34" (ELEV=12.66)		

SEPTIC SYSTEM TEST HOLES

D.O.H. 1 (12-29-05)		D.O.H. 2 (12-98-05)	
0"	FILL	0"	FILL
20"	C1- SAND 10YR5/6	18"	A - LOAMY SAND 10YR5/6
72"	C2- SAND 10YR5/6	36"	B- LOAMY SAND 10YR5/6
84"	C2- SAND 10YR5/6	50"	NO GRAVEL
132"		120"	C-COURSE SAND 10YR5/6
ADJ GND WTR 40"(EL=14.7)		MOTTLING @ 48"(EL=14.1)	
STANDING 59"		STANDING 96"	
PERC AT 48"		PERC AT 58"	
RATE: <2 MPI		RATE: 2 MPI	

D.H. NO. 3 (12-29-05)		D.O.H. 4 (11-8-06)	
0"	A - LOAMY SAND 10 YR 2/1	0"	FILL
10"	B- LOAMY SAND 10YR 4/6	18"	A - LOAMY SAND 10YR5/6
23"	C1- SAND 10YR5/6	36"	B- LOAMY SAND 10YR5/6
		50"	NO GRAVEL
		120"	C-COURSE SAND 10YR5/6
ADJ GND WTR 38"(EL=14.0)		MOTTLING @ 48"(EL=14.1)	
STANDING 51"		STANDING 96"	
PERC AT 30"		PERC AT 58"	
RATE: <2 MPI		RATE: 2 MPI	

OBSERVED BY: JOHN SCHNAIBLE,CEC D.O.H. 1-3
 ROY OKUROWSKI,CEC D.O.H. 4
 WITNESSED BY: GEORGE MICHOV GALE ASSOC., INC
 ROY OKUROWSKI,CEC GALE ASSOC., INC
 THE ABOVE SOIL LOGS REPRESENTS THE SOIL CONDITION AT THEIR PARTICULAR LOCATION. THE SOIL CONDITIONS MAY VARY IN OTHER LOCATIONS.
 ESTIMATED HI-GROUND WATER IS BASED ON TP-2, ELEVATION 69.8-- USING FRIMPTER--



LOCUS
 ASSESSORS LOT 106-742-004
 169,063 S.F.± OR 3.88 ACRES±

BENCHMARK
 HYDRANT SPINDLE
 ELEVATION = 22.65
 (N.A.V.D. '88)

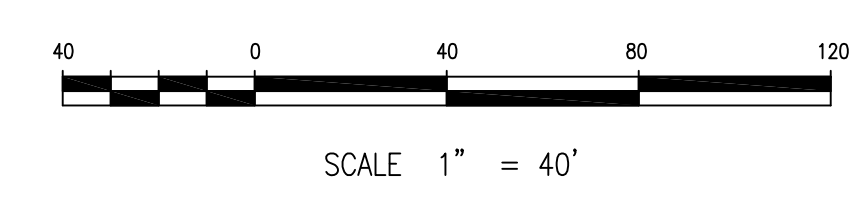
ASSESS. PARCEL 106-742-006
 #289 ST. GEORGE STREET
 N/F MILLBROOK MARKETPLACE, L.L.C.
 DEED BOOK 47285 PAGE 75

ASSESS. PARCEL 106-229-012
 #0 STRAWBERRY LANE
 N/F STRAWBERRY LANE ASSOCIATION TRUST
 DEED BOOK 4741 PAGE 192

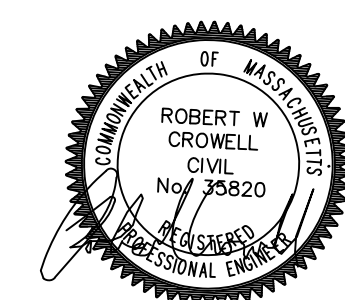
ASSESS. PARCEL 106-034-000
 #114 ALDEN STREET
 N/F ELIZABETH BRADLEY
 DEED BOOK 50358 PAGE 60

OBSERVED BY: FREEMAN BOYNTON III 9-27-23 #1&2
 WITNESSED BY: TRACY MAYO

D.H. NO. 9-27-23 #1		D.H. NO. 9-27-23 #2	
0"	A - SANDY LOAM 10 YR 32/2	0"	HTM
6"	B- LOAMY SAND 10YR 5/6	32"	Bw- SANDY LOAM 10YR5/8
18"		36"	C1- LOAMY SAND 10YR6/6
39"	C1- M-C SAND 2.5Y6/3		
120"	C2- LS 10YR6/6	85"	
STANDING 62" PERC AT 39" RATE: <2 MPI		STANDING 58" PERC AT 44" RATE: <2 MPI	



EXISTING CONDITIONS PLAN
THE WINSOR
 at
MILLBROOK VILLAGE
 DUXBURY, MA
 PREPARED FOR
THE WINSOR
 at
MILLBROOK VILLAGE LLC
CROWELL ENGINEERING
 981 LONG POND ROAD
 PLYMOUTH, MA 02360
 774-283-0443



△#	REVISIONS PER:	DATE:	DATE ISSUED:	11/30/22	DRAWING NAME:
1	SUBMIT TO ZBA	6-15-23			EXISTING CONDITIONS PLAN 2
2	REVIEW ENGINEER	7-5-23			
3	REVIEW ENGINEER	9-12-23			
4	REVIEW ENGINEER	9-22-23			
5	ZBA_SEPTIC,WETS	11-2-23			
6	ADD INT. STREAM	11-17-24			