

# WELCOME TO DUXBURY'S CONSERVATION AREAS

Led by the Duxbury Conservation Commission, a variety of agencies and organizations have permanently protected over 3,000 acres of land in Duxbury. Beginning in the 1890s, members of the Duxbury Rural Society (now Duxbury Rural & Historical Society) purchased one of the first parcels of conservation land in Massachusetts and in the United States. Today, the following agencies and organizations have major land holdings in Duxbury:

- Commonwealth of Massachusetts
- Duxbury Beach Reservation, Inc.
- Duxbury Conservation Commission
- Duxbury Rural & Historical Society
- Historic O'Neil Farm, Inc.
- Massachusetts Audubon Society
- Town of Duxbury
- Wildlands Trust

This guide describes ten major conservation areas and their public trails which will take you through diverse landscapes including cranberry bogs, pond and stream frontages, a white cedar swamp, farm pastures, and mixed forest upland. Duxbury's open space protects our drinking water supply and biodiversity, provides resilience to climate change, protects wildlife habitat, and offers passive recreational opportunities for the public. We hope you enjoy your time here.

For your convenience and safety, parking areas are noted on the individual maps.

Please observe the "Rules and Regulations for Use of Town of Duxbury Conservations Lands" detailed on the back side.



Map & Brochure Design: © MapWorks 2021  
Harwich MA 02645-6505  
MAPS@SARWORK@aol.com



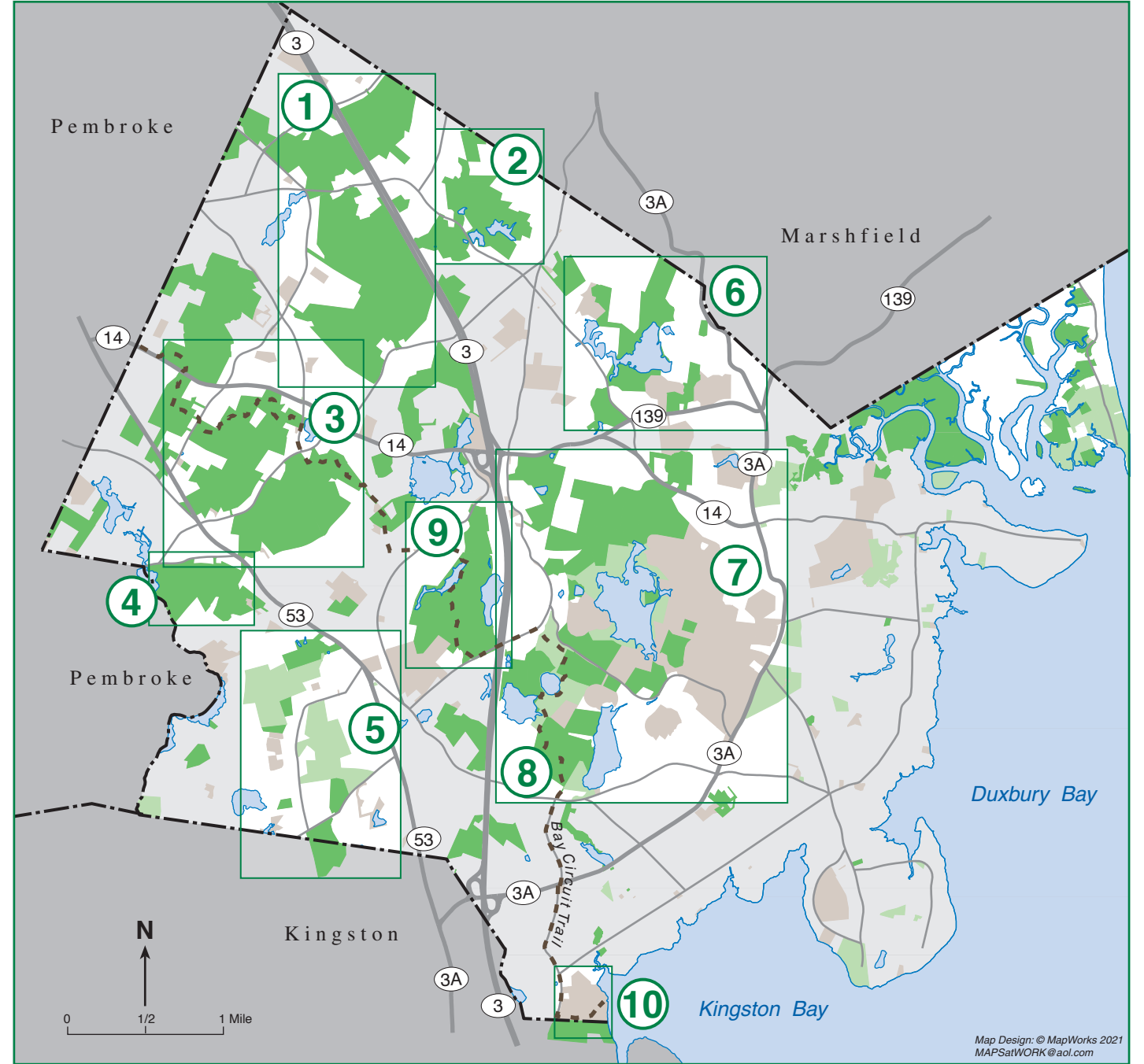
Printed on recycled paper with vegetable-based ink



Printed on recycled paper with vegetable-based ink

### Trail Map Legend

- Duxbury Conservation Land
- Nonprofit Organization Land
- Other Town or State Land
- Trail (some color-coded)
- - - Bay Circuit Trail
- - - - Other Trail
- ▬▬▬ Bridge or Boardwalk
- P Parking
- Observation Platform
- ▲ Memorial Monument or Feature
- 1 Numbered Location Post
- Open Water
- ▨ Wetland
- ▨ Cranberry Bog

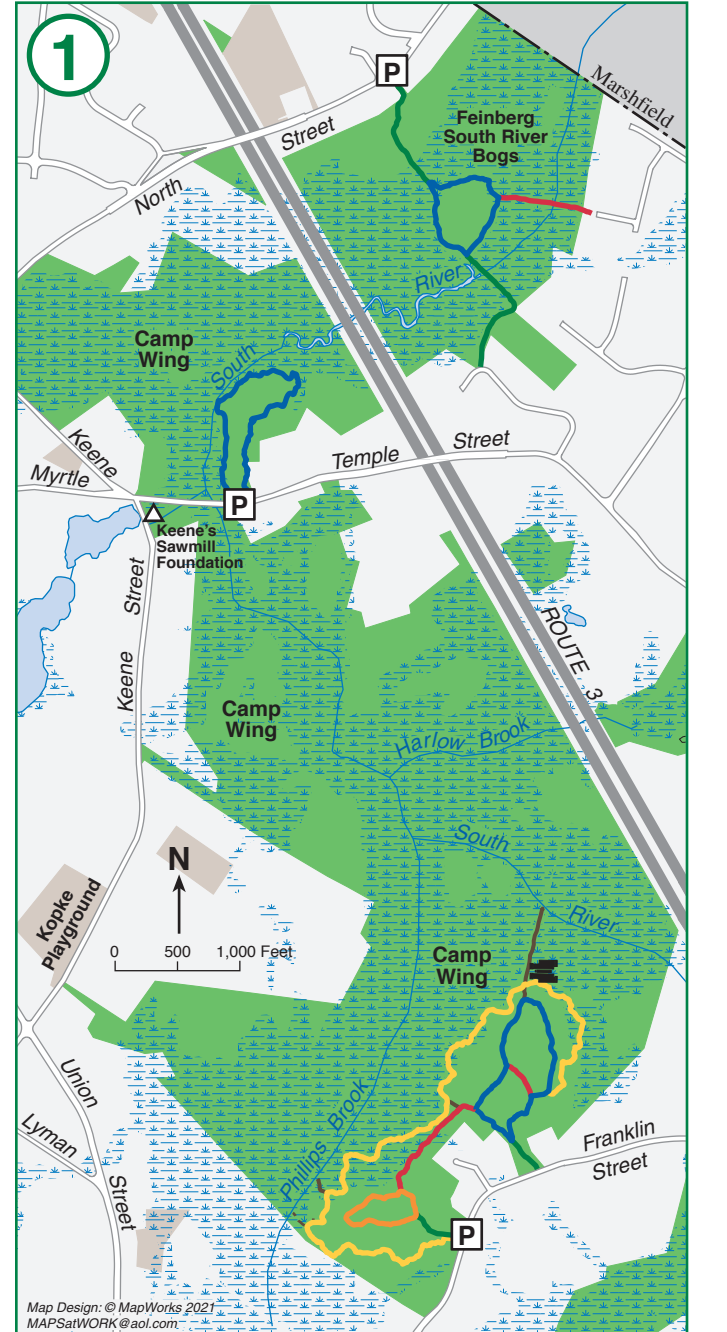


## Duxbury Walking Areas

- |  |   |
|--|---|
| <ul style="list-style-type: none"> <li><span style="color: green;">1</span> Camp Wing Conservation Area</li> <li><span style="color: green;">2</span> Whiton Woods &amp; Cedar Crest</li> <li><span style="color: green;">3</span> Lansing Bennett Forest</li> <li><span style="color: green;">4</span> Thaddeus Chandler Sanctuary</li> <li><span style="color: green;">5</span> O'Neil Farm &amp; Berrybrook Fields</li> </ul> | <ul style="list-style-type: none"> <li><span style="color: green;">6</span> Gifford Bog &amp; Williams Preserve</li> <li><span style="color: green;">7</span> North Hill Marsh Conservation Area</li> <li><span style="color: green;">8</span> Round Pond Conservation Area</li> <li><span style="color: green;">9</span> Duxbury Bogs</li> <li><span style="color: green;">10</span> Bay Farm</li> </ul> |
|--|---|

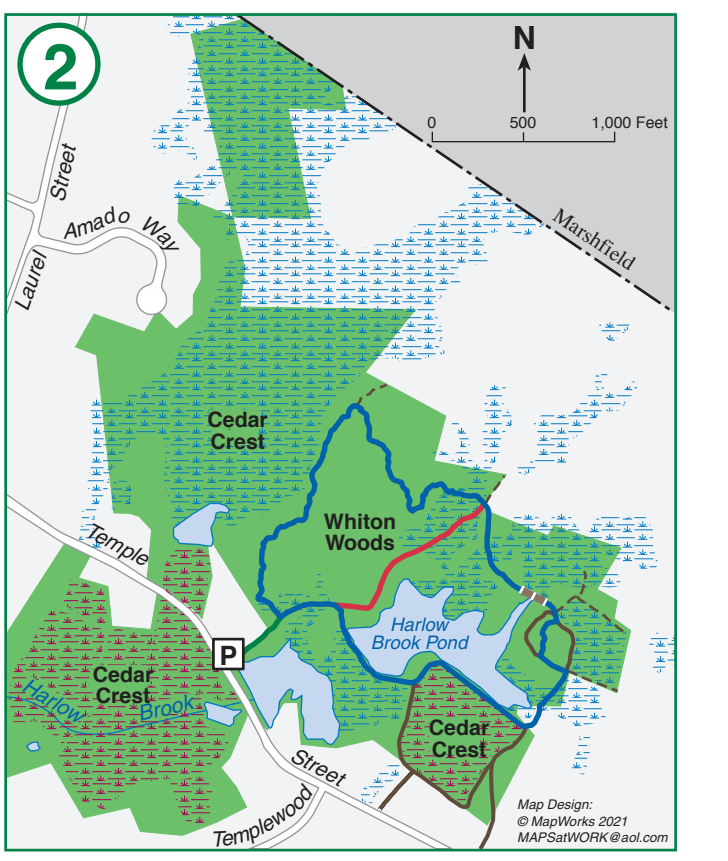
### 1 Camp Wing Conservation Area

Early settlers designated this area as common land for woodcutting, hunting, and fishing. The land was purchased from Crossroads for Kids, Inc. in 1998. Currently, Crossroads, Inc., a non-profit organization serving local and inner-city youth, owns the 157 acre Camp Wing on Keene Street. Over two miles of the South River, which flows to Massachusetts Bay, are now protected.  
**Property Details:** 450 acres  
 Franklin Street: 2.7 miles of trails: Blue Loop: 0.6 miles, Orange Loop: 0.2 miles, Red: 0.2 miles, Yellow: 1.3 miles  
 Temple Street: Blue Loop: 0.6 miles



### 2 Whiton Woods & Cedar Crest

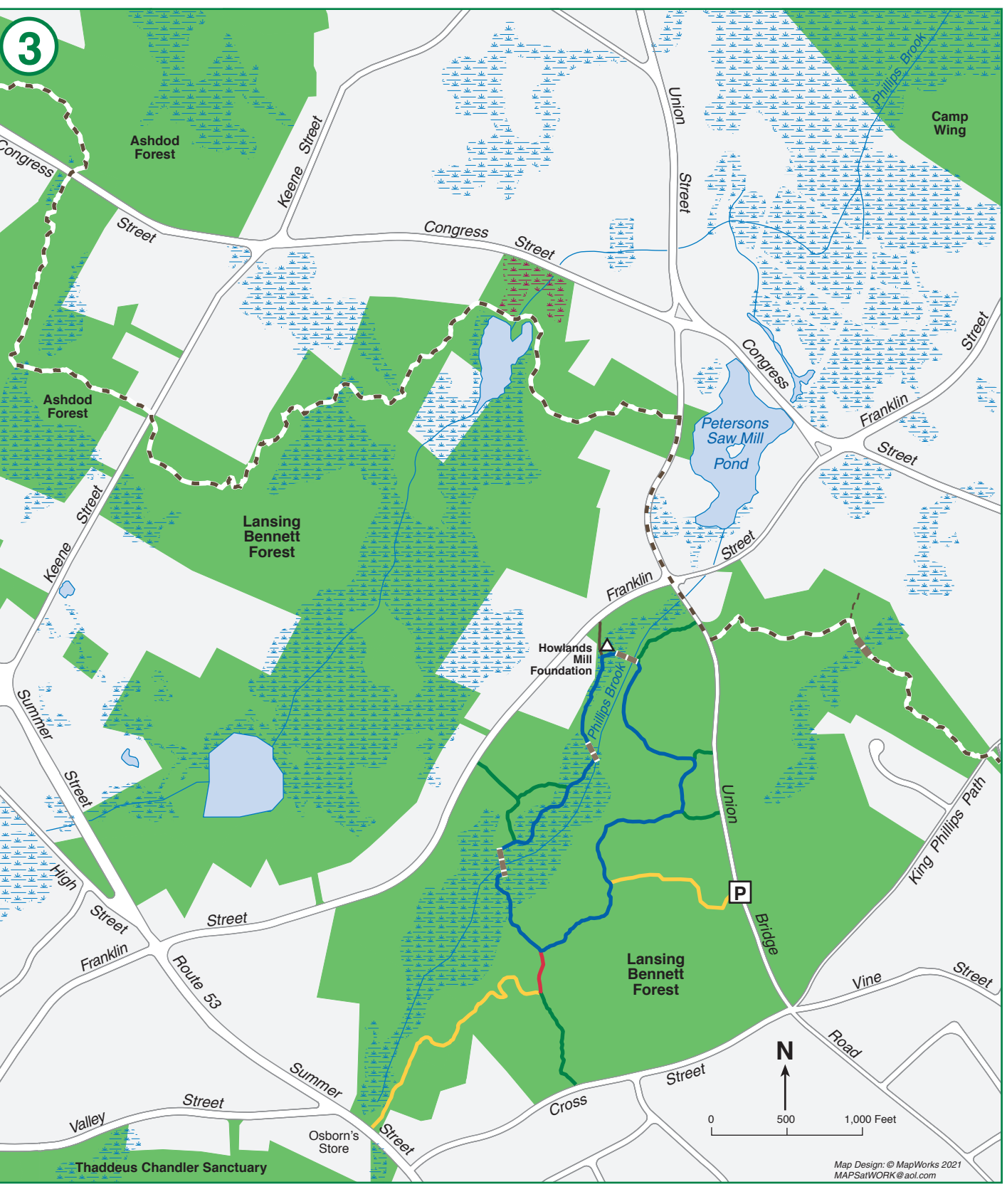
This property offers enjoyable walking trails through diverse vegetative communities. Whiton Woods, purchased in 1970 from Harry Whiton, contains a 1.2 mile loop trail that connects Whiton Woods with the Cedar Crest parcels.  
**Property Details:** 154 acres  
 2.2 miles of trails: Blue Loop: 1.2 miles  
**Vegetation:** Eastern white pine, red and white oak, hollies, white cedar swamp, red maple, red cedar, yellow birch, hickory, tupelo, high bush blueberry, cranberry bogs  
**Features:** Creeks meandering through moist woodland ferns; Turtle nesting area; Stone walls; Rock outcroppings  
**Terrain:** Moderate - Narrow footpaths w/grades  
**Parking:** Roadside parking along Temple Street



### 3 Lansing Bennett Forest

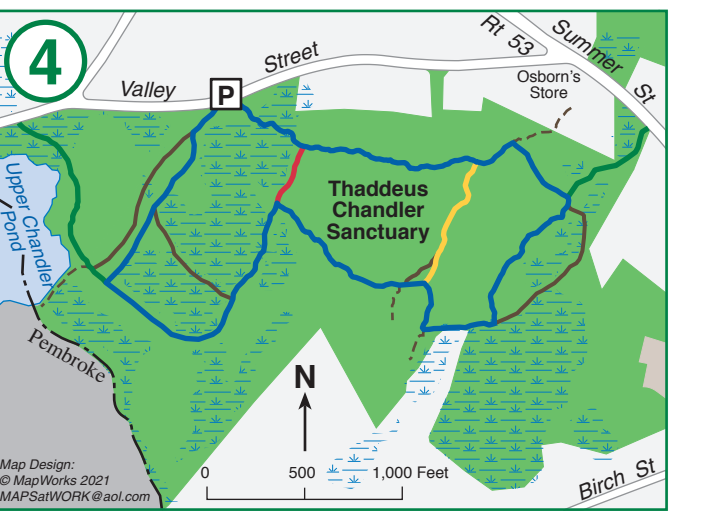
**Vegetation:** Upland mixed forest, freshwater marsh, red maple swamp  
**Features:** Several rare and uncommon plants and animals; River frontage; Granite remains of the Keene's Sawmill foundation, used for the production of cranberry boxes; South River  
**Terrain:** Easy-Moderate - Relatively flat main trails with some hills  
**Parking:** Lots located on Franklin and Temple Streets  
 Roadside parking along North Street

### 3 Lansing Bennett Forest



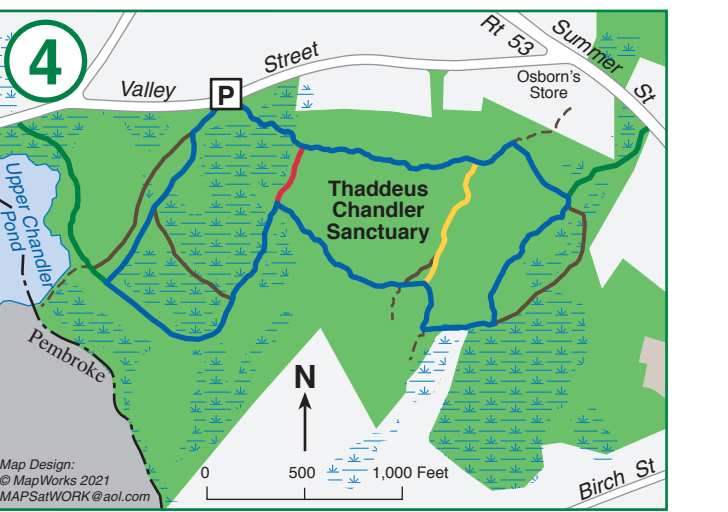
### 3 Lansing Bennett Forest

This property is named for Dr. Lansing H. Bennett, Chair of the Duxbury Conservation Commission in the 1960s. He was instrumental in creating the Duxbury Greenbelt Land Protection Plan, which serves as a guide for Duxbury's conservation land acquisitions today. Once supporting a trout farm, young trout can still be spotted in the spring-fed cold water Phillips Brook. The Bay Circuit Trail runs through the property.  
**Property Details:** 344 acres  
 2.8 miles of trails: Blue Loop: 1.1 miles, White (Bay Circuit Trail): 0.5 miles  
**Vegetation:** Eastern white pine, red and white oak, eastern hemlock, yellow birch, high bush blueberry, red maple  
**Features:** Boardwalk along Phillips Brook; Granite remains of Howland's Mill, considered to be the last mill built in Duxbury; There was once a post-Revolutionary War charcoal pit for smelting bog iron ore for shipbuilding purposes on the property  
**Terrain:** Moderate - Hilly terrain  
**Parking:** Roadside parking with information kiosk along Union Bridge Road



### 4 Thaddeus Chandler Sanctuary

Once a farm operated by Thaddeus Chandler, a Civil War veteran, the farm contained cranberry bogs and a sawmill for processing wood from his extensive woodlots. The property contains a 1.3 mile loop trail as well as many spurs and connecting trails, suitable for all skill levels.  
**Property Details:** 115 acres  
 2.8 miles of trails: Blue Loop: 1.3 miles  
**Vegetation:** Eastern white pine, red and white oak, red maple; wetland grasses and shrubs  
**Features:** Upper Chandler Pond; Flowing brooks; Remains of the cranberry industry ditches  
**Terrain:** Easy-Moderate - Relatively flat with some hills on the east side  
**Parking:** Roadside parking along Valley Street



### 5 O'Neil Farm & Berrybrook Fields

O'Neil Farm, in production for over 200 years, is one of the oldest working dairy farms on the South Shore. The Avery Trail has interpretive signs and passes through woods and past grazing cows. The Chandler Trail begins on a dirt road leading to an open field and into woods, where there are interpretive signs and a brook crossing.  
**Property Details:** 145 acres  
 Avery Trail: 0.8 mile loop, Chandler Trail: 1.5 mile loop  
**Vegetation:** Eastern white pine, red & white oak, hay fields  
**Features:** Dairy farm; Brooks; Pastures; Vernal pool  
**Terrain:** Easy/moderate - Relatively flat  
**Parking:** Lot with an information kiosk is on Autumn Ave  
 Berrybrook Fields provide a scenic streetscape where mown fields surround an iconic oak tree.  
**Property Details:** 41 acres  
**Vegetation:** Hay field, oaks, Eastern white pine  
**Features:** Farm road; Vernal pools  
**Terrain:** Easy - Relatively flat  
**Parking:** Roadside parking is available along Winter Street

