

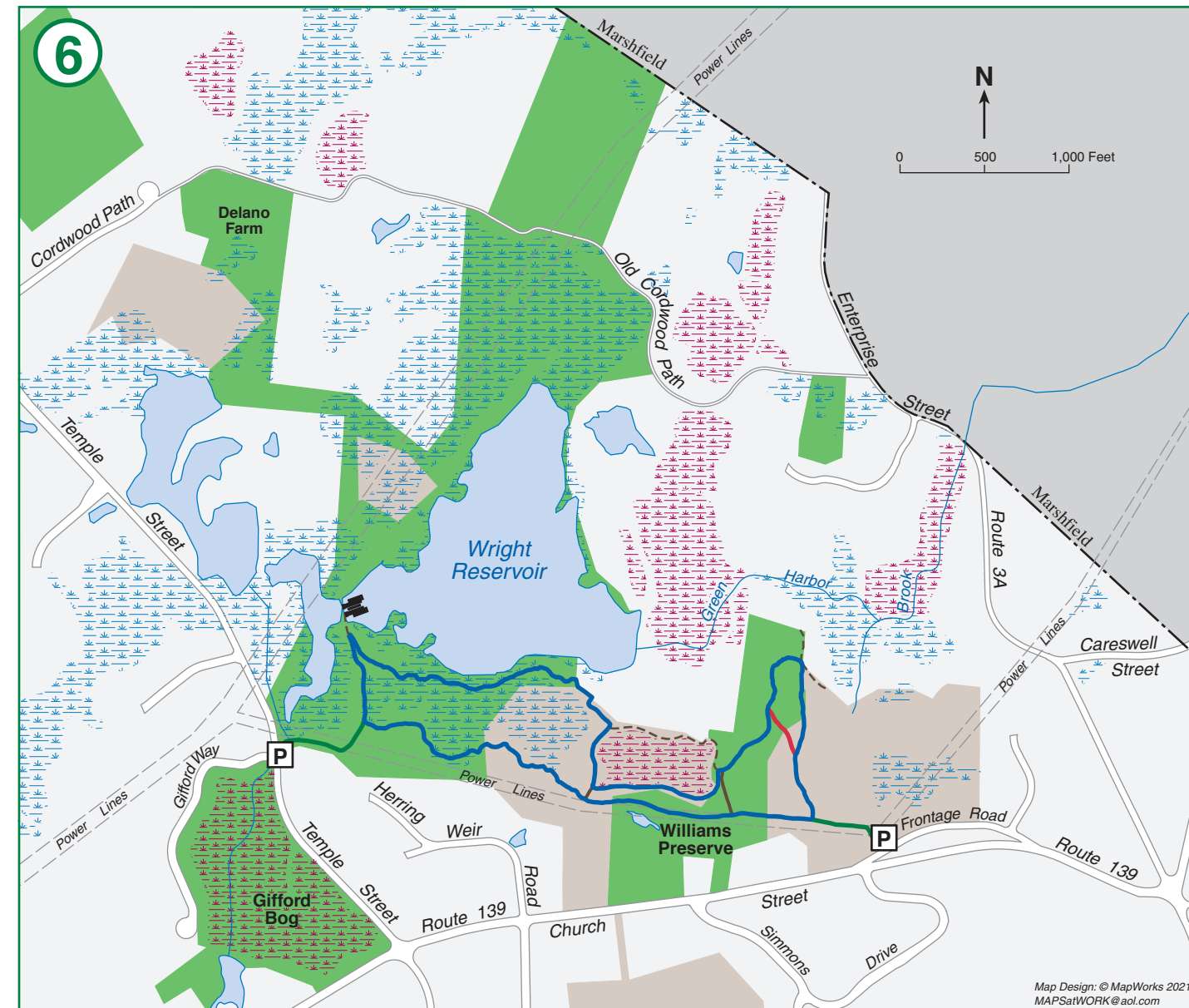
RULES & REGULATIONS FOR USE OF TOWN OF DUXBURY CONSERVATION LANDS

The Duxbury Conservation Commission welcomes and encourages public use and enjoyment of the land under its stewardship. Pursuant to M.G.L. Chapter 40, s.8c, the Conservation Commission has adopted these rules and regulations in order to preserve and protect in perpetuity the wildlife, aesthetic, ecological, environmental, and conservation values while allowing for the enjoyment and recreational use of these properties.

- General Use.** All users shall:
 - Follow the rules and regulations herein.
 - Park motor vehicles only in indicated lots and not in front of gates or unsafe locations.
 - Exhibit courtesy for others.
 - Yield to equestrians.
 - Use the property in a manner that leaves no trace of use.
- Hours.** Conservation land is open to the public from sunrise to sunset, unless specific written permission has been obtained from the Conservation Commission.
- Groups.** Any use by commercial or organized groups of more than five (5) persons requires prior written permission from the Conservation Commission.
- Work.** No cutting, removing vegetation, trail construction, maintenance, excavation, filling, building structures, posting signs, installation of memorials or displays or other work is allowed without written permission from the Conservation Commission.
- No Dumping.** Dumping, littering, filling, or deposition of rubbish or yard waste is prohibited.
- Motorized Vehicles.** Motorized vehicles are prohibited except for emergency response by the Police and Fire Departments, or maintenance activities, or with prior written permission of the Conservation Commission.
- Animal Control/Dogs.** The Town's animal Control By-Law Chapter 7.1 shall apply on all conservation property. All dogs shall be effectively restrained and controlled by a chain or leash, or otherwise under the immediate and effective control of a handler, or confined to a motor vehicle. Each person who owns, possesses or controls a dog shall remove and properly dispose of any feces left by his/her dog. For current rules see: <https://www.town.duxbury.ma.us/animal-control>
- An annual Dog Walking Permit,** as issued by the Duxbury Town Clerk, must be obtained by the Dog Owner prior to walking a dog on Town of Duxbury / Conservation Land and Duxbury Beach. To obtain a Walking Permit, the Dog Owner must supply proof of a current dog license from the Town of Duxbury or other issuing jurisdiction. The tag must be worn on the permitted dog's collar / harness. A fee is charged for the permit and is used to help offset the cost of the dog waste removal program.
- Fires.** No fires of any kind are permitted except with prior written permission of the Conservation Commission.

continued following Map 10, Bay Farm

6 Gifford Bog & Williams Preserve



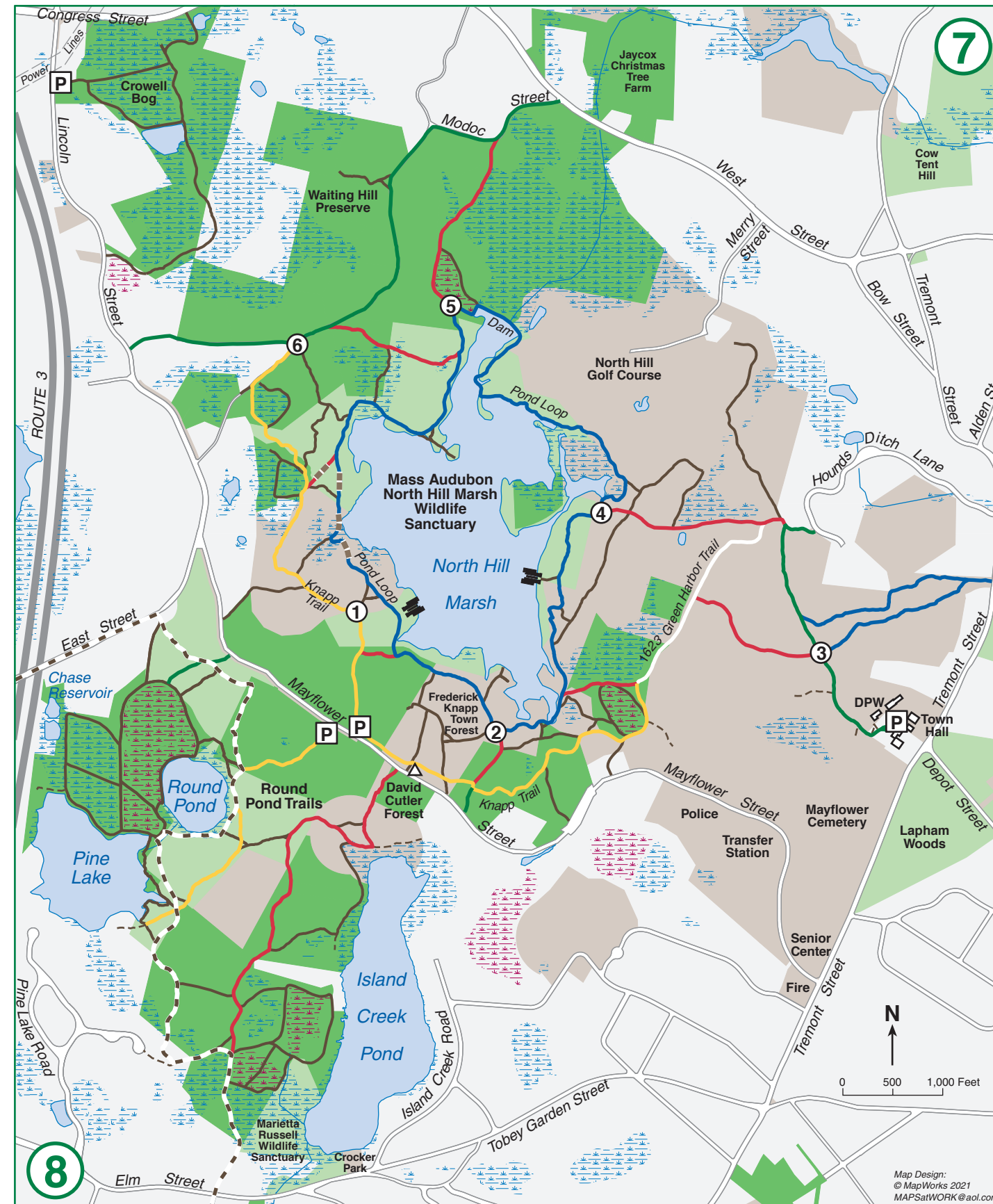
Gifford Bog is the oldest working bog in Duxbury dating to c.1855.

Property Details: 22 acres
Features: Cranberry bogs
Terrain: Easy around working bogs
Parking: Roadside parking along Temple Street



Williams Preserve homestead was built c.1911 by Jack Williams who lived there for nearly 92 years. Jack worked the bog, managed the Christmas tree farm, and enjoyed wildlife. Williams trails course along the Wright Reservoir, a cranberry bog, and wooded uplands.

Property Details: 200 acres
 2.3 miles of trails: Blue Loop: 1.7 miles
Vegetation: Eastern white pine, red and white oak, wetland shrubs, cranberry bogs
Features: Cranberry bogs; Wright Reservoir; Williams' former Christmas tree farm
Terrain: Easy around the bogs, moderate in the woodlands
Parking: Lot located on Frontage Road, off of Church St.



7 North Hill Marsh Conservation Area

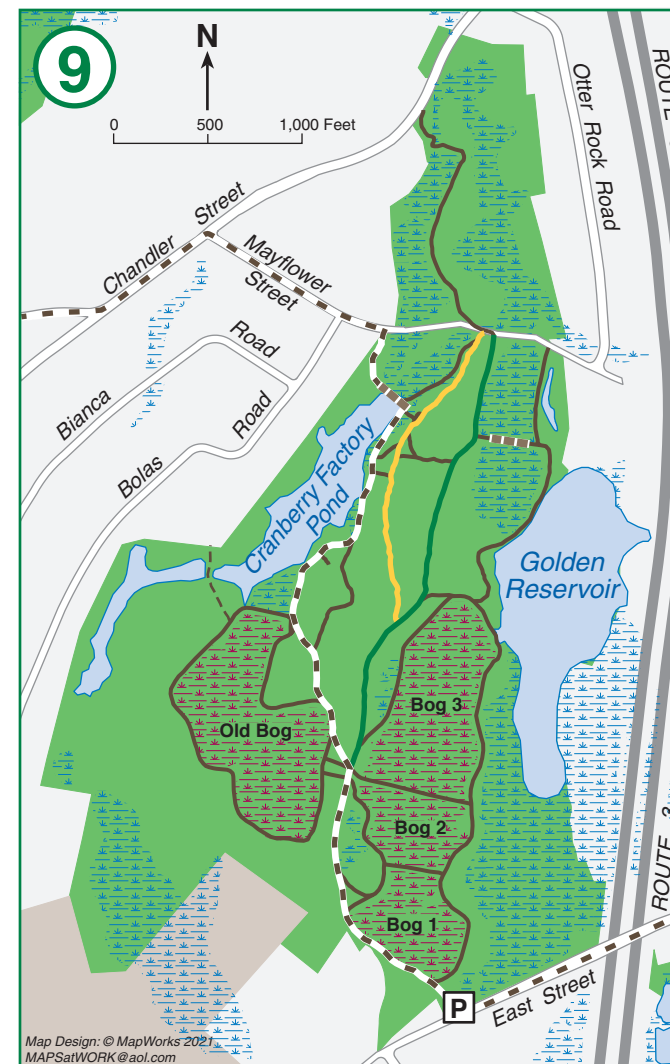
This is the town's largest contiguous area of open space and most popular area for passive outdoor recreation. The property is under the jurisdiction of the town of Duxbury and Mass Audubon Society and is managed by the Duxbury Conservation Commission. Mass Audubon owns the 90 acre wildlife sanctuary which has several trails with sweeping water views and areas for observing waterfowl. A 2.7 mile pond loop trail circles the North Hill Marsh and is a brisk one-hour hike. The town owns the remainder of the property, which includes the Knapp Town Forest, Waiting Hill Preserve, North Hill Country Club, and a number of working cranberry bogs. The 1623 Green Harbor Path, traversing an upland section, was a Native American footpath later used by the first settlers of Plymouth Colony.

Property Details: 987 acres. 9.2 miles of marked trails: Blue (Pond Loop): 2.7 miles, Yellow (Knapp Trail): 1.7 miles, White (1623 Green Harbor Trail): 0.5 miles, Green: 1.2 miles
Vegetation: Eastern white pine, red and white oak, red maple, wetland shrubs
Features: North Hill Marsh; Wetlands; Kettle holes; Glacial topography; Cranberry bogs
Terrain: Easy-Difficult - Mix of flat terrain, hills, valleys, cart paths
Parking: Lots with information kiosks are located on the north side of Mayflower Street and behind the First Parish Church on Tremont Street. Roadside parking available at various trailheads on Mayflower Street

8 Round Pond Conservation Area

In the early 1890s the Duxbury Rural Society, Inc. (now DRHS) began purchasing land around Round Pond for picnicking and carriage rides. Round Pond is a kettle hole that was formed by a melting glacier about 18,000 years ago. Ice was harvested from the pond for summer residents into the 1940s. The bogs were purchased using Community Preservation Act Funds. The Round Pond Conservation Area includes the David Cutler Forest, named for conservationist and owner/editor of the Duxbury Clipper, the town's local newspaper.

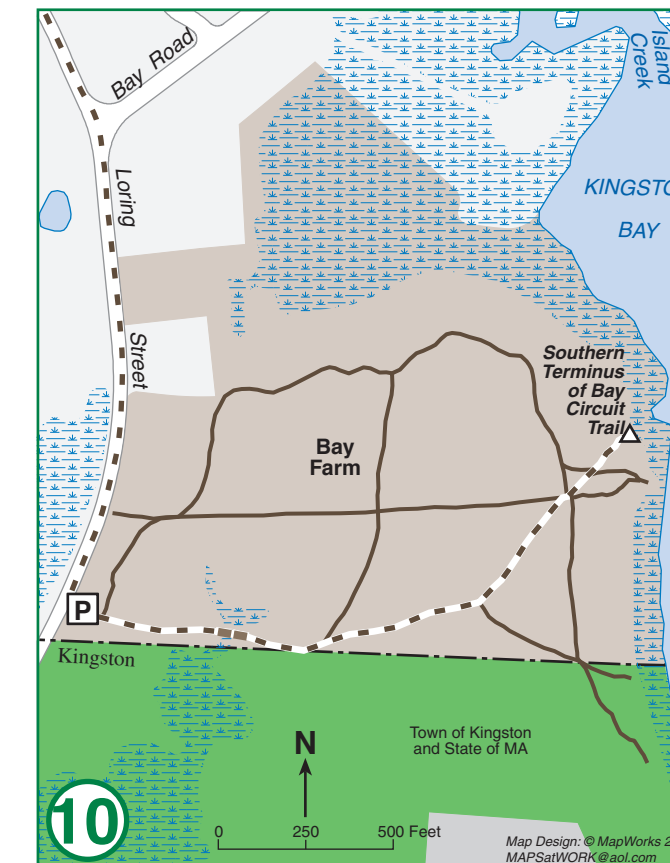
Property Details: 242 acres. 3 miles of trails: White (Bay Circuit Trail): 1.5 miles, Red: 0.8 miles, Yellow: 0.6 miles
Vegetation: Eastern white pine, red and white oak, wetland grasses and shrubs, cranberry bogs
Features: Pond/reservoir; Network of cranberry ditches and dikes; Undulating terrain and kettle holes
Terrain: Easy-Moderate - Mixed flat and steep grades suitable for hiking, biking, and horseback riding
Parking: Lot with information kiosk is located on the south side of Mayflower Street



9 Duxbury Bogs

This area was purchased by the town in 1971 to preserve Duxbury's agricultural heritage. The bog reservoir offers habitat to a wide variety of waterfowl, especially during migration. The Bay Circuit Trail runs North-South through the property.

Property Details: 198 acres. 4.5 miles of trails: White (Bay Circuit Trail): 0.8 miles
Vegetation: Eastern white pine, red and white oak, wetland shrubs, cranberry bogs
Features: Cranberry bogs; Glacial topography; Reservoir views
Terrain: Easy-Moderate - Cart paths, network of cranberry ditches and dikes, some trails ascend steep topography
Parking: Lot located on the north side of East Street



10 Bay Farm

Long before the first Duxbury landowners began farming these fields in 1627, Native Americans occupied this area. Three centuries later, this property was owned by the Bay Farm Company which raised dairy cows, bulls, heifers, horses, hogs, and chickens. The majority of Bay Farm is now open field and is managed for recreation and field nesting birds, such as bobolink and woodcock. At the end of the field, you will be rewarded with beautiful views of Kingston Bay.

Property Details: 44 acres. 1.4 miles of trails: Southern terminus of the (White) Bay Circuit Trail, a 200+ mile trail from Duxbury to Newburyport
Vegetation: Cedar forest, wetland shrubs and grasses, wet meadow, open field
Features: Open field; Views of Kingston Bay; Coastal beach; Rock ledge
Terrain: Easy - Relatively flat
Parking: Lot with is located on the east side of Loring St.



RULES & REGULATIONS FOR USE OF TOWN OF DUXBURY CONSERVATION LANDS

(continued from back cover panel)

- Camping.** No camping is permitted except with prior written permission of the Conservation Commission.
- Weapons.** Use of firearms, paintball guns, and pellet guns is prohibited, other than limited use for hunting (See Section 14).
- Alcoholic Beverages.** Alcoholic beverages are prohibited.
- Bicycles.** Bicycles may use open trails subject to the following:
 - Bicyclists must yield to pedestrians and horses.
 - Bicyclists must ride safely and exhibit caution and courtesy, especially on heavily used trails.
 - Riding must occur in a manner that does not erode or damage trails.
- Fishing.** Fishing is permitted on water bodies within the Conservation Lands subject to applicable Commonwealth of Massachusetts fishing license and regulations.
 - Fishing activities must be performed in a manner that does not disturb other users.
 - All fishing lines and tackle must be removed.
- Hunting.** Hunting is not permitted except as follows:
 - All applicable Federal, Massachusetts, and local firearms and hunting regulations must be adhered to for any hunting activities.
 - Only archery hunting of deer is permitted on designated conservation lands; to see where archery hunting is allowed go to: www.town.duxbury.ma.us/conservation
 - Archery hunting of deer is allowed for the entire Massachusetts deer hunting season.
 - Portable tree stands and ladders with strap fasteners are allowed; nothing may be nailed or screwed into trees.
 - Tree stands may be erected no sooner than two weeks before the start of the Massachusetts archery season and must be removed no later than 4 weeks after deer season ends.
 - No hunting is permitted within 150 feet of any marked (blazed) walking trail.
 - Waterfowl hunting is permitted on salt marsh owned by the Conservation Commission and the Camp Wing Conservation area (go to www.town.duxbury.ma.us/conservation)
- Any activities and uses not set forth here require the permission of the Conservation Commission.
- The Conservation Commission may undertake or contract with others to undertake all necessary management actions notwithstanding any of the other provisions of this document.
- A fine of not more than \$100 per day shall be imposed for any violation of these regulations, according to the following schedule: \$50 for a first offense, \$75 for a second offense, and \$100 for a third or subsequent offense. These fines may be imposed under the provisions of M.G.L. Ch 21D by the police or by Commission members or staff. Each day shall constitute a new offense.

2021

Duxbury Walking Trails



Produced by
Town of Duxbury Conservation Commission

781-934-1100 x5470