

ARTICLE 17 POLICE STATION PROJECT

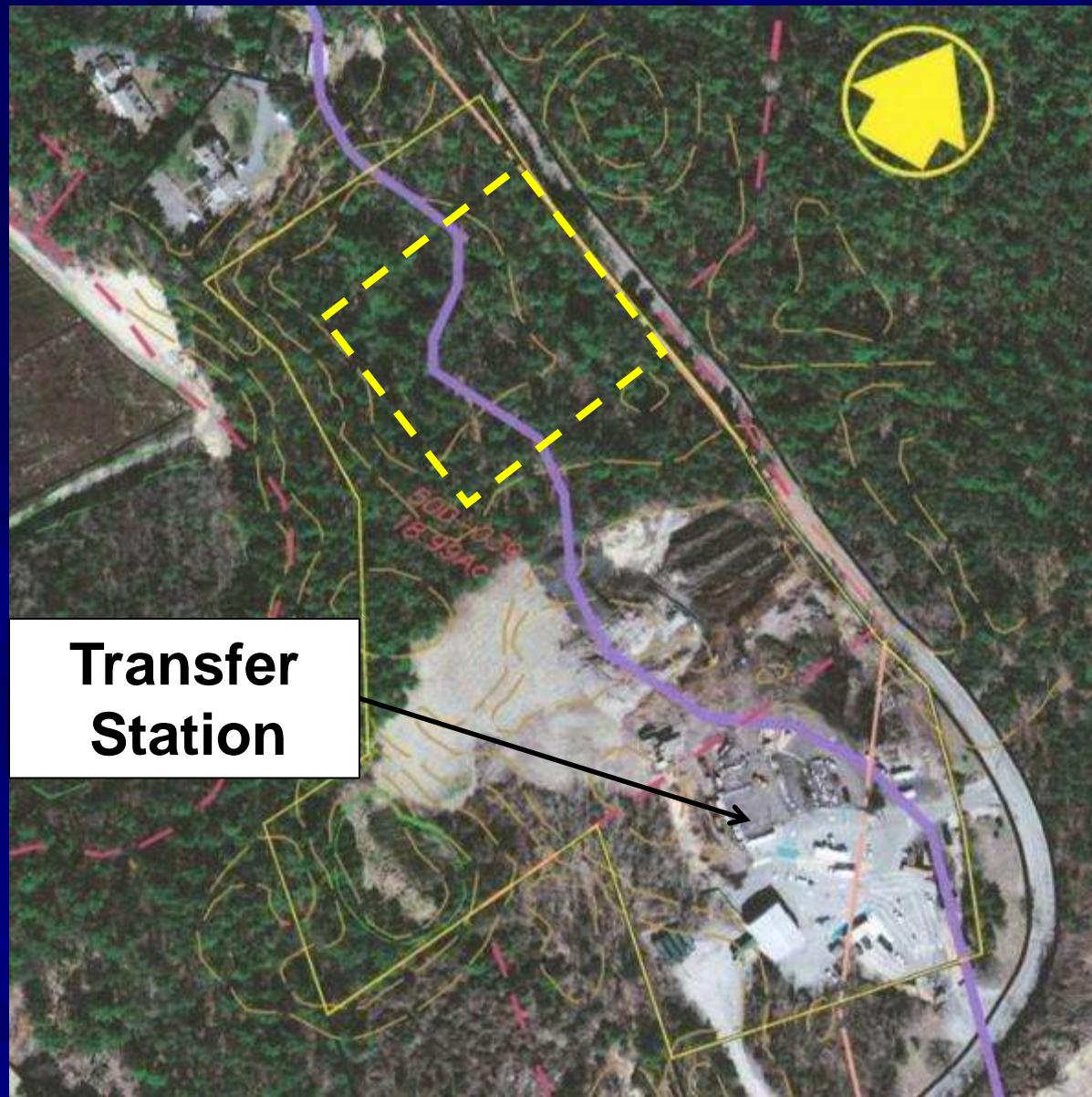


Police Station – Project History

- 2008 ATM – Requested \$1.0 Million for Design of Police and Fire Stations – Police Station at Exit 11
- 2009 ATM – Requested \$435,000 for Design at Mayflower St. – Also Studied Combined Facility
- 2010 ATM – Appropriated \$30,000 Capital Funds for Conceptual Design

Police Station – Proposed Project

- Replace existing police station
- Looked at 5 potential sites
- Need to maintain police operations during construction
- Requesting Design and Construction Funds



Proposed Site – Mayflower St.



Police Station –Floor Layout



Police Station – Front Elevation



Police Station – Proposed Total Project Budget

	BUDGET
BUILDING CONSTRUCTION (Includes 5% Contingency)	\$ 4,998,000
CONSTRUCTION RELATED COSTS (Relocation, OPM, Utilities, Testing, Legal, Hazardous Materials)	\$ 189,000
FURNISHING AND EQUIPMENT (Furniture, Security, Communications, Technology)	\$ 588,000
ARCHITECTURAL AND ENGINEERING FEES	\$ 500,000
TOTAL REQUEST	\$ 6,275,000

Police Station – Estimated Tax Impacts

- \$85.00 Estimated Annual Tax Increase for Median Home with Assessed Value of \$481,100
- 20 year, Level Principal, 4.50% Rate

Police Station – Proposed Schedule

- Appropriate Design and Construction Funds - March 12th ATM with Debt Exclusion Override Election March 26th
- Contract Bid Documents ready August 2011
- Bid Project September, 2011
- Construction begins in fall 2011 with completion in October 2012.

Questions?







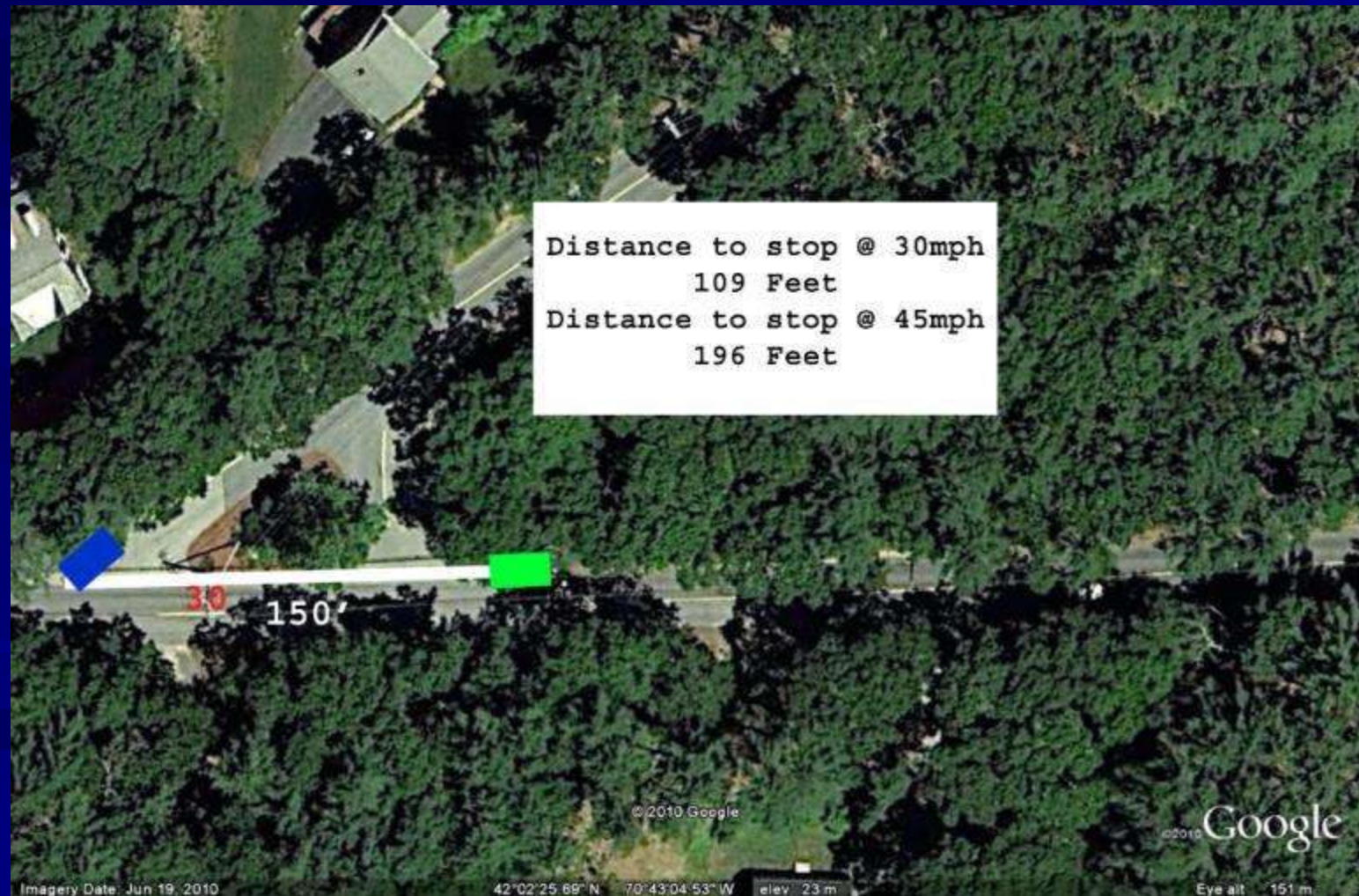
Potential Police Station Site – West St.



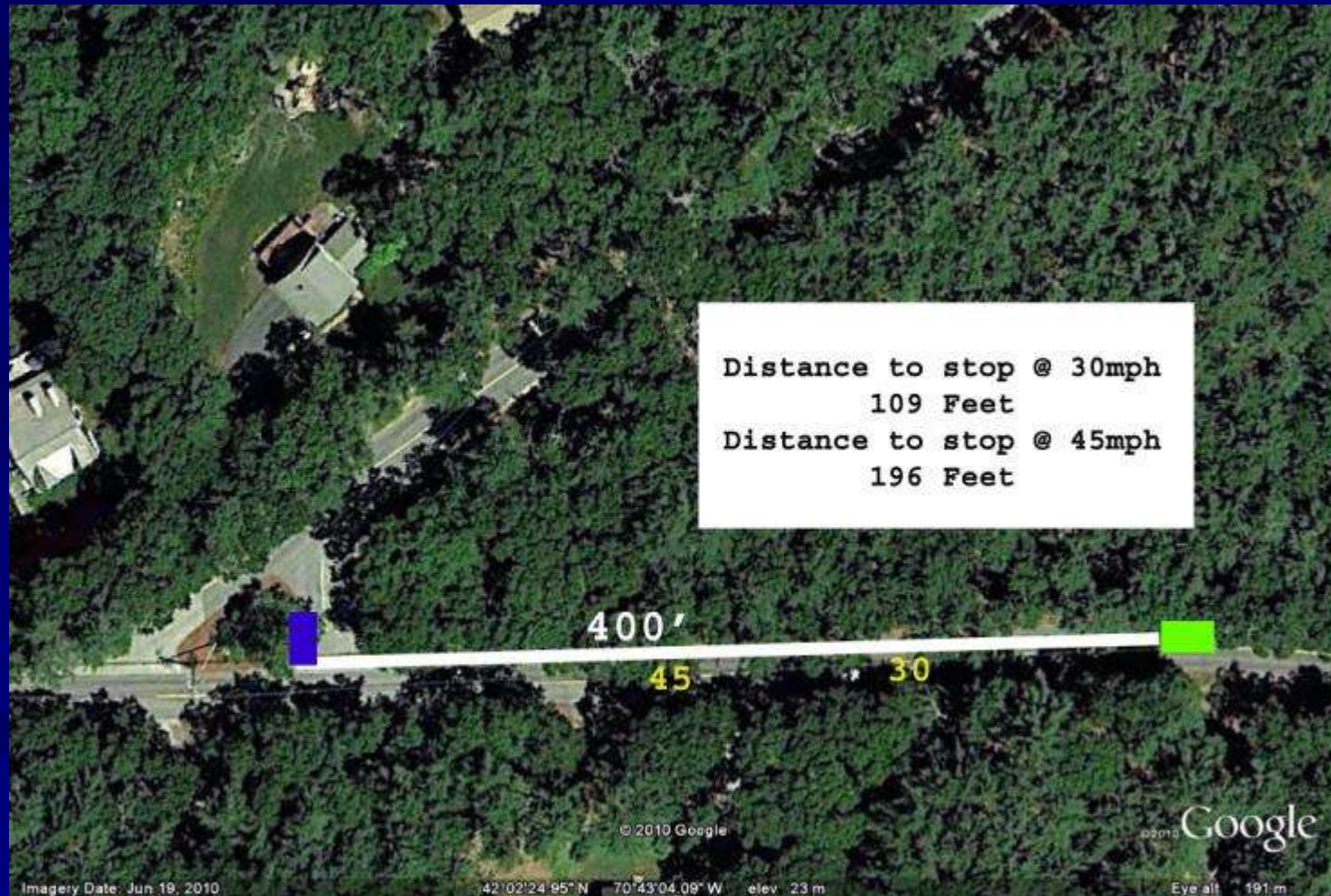
Potential Police Station Site – Lincoln St.

THE MAYFLOWER / EAST ST. INTERSECTION

The current traffic pattern at Mayflower St. and East St. only allows 150' of visibility . That does not allow enough time for a car traveling at 45 mph on East St. to stop before reaching the intersection.



By changing the traffic pattern at the intersection, visibility is increased to over 400'. That is more than twice the distance needed to stop when traveling at 45 mph and nearly four times the distance when traveling at 30 mph.





© 2010 Google

© 2010 Google

Imagery Date: Jun 19, 2010

42°01'22.63" N 70°42'50.34" W elev 14 m

Eye alt 114 m

Lobby Traffic Survey

<i>Purpose</i>	<i>2 Wks</i>	<i>Day</i>	<i>Year</i>
See Employee	26	1.86	676
Crime Related	13	0.93	338
Administrative	34	2.43	884
Directions	13	0.93	338
Vendor	22	1.57	572
Bathroom	6	0.43	156
Unknown	3	0.21	78
Total	117	8.36	3042

<i>Time</i>	<i>2 Wks</i>	<i>Day</i>	<i>Year</i>	<i>%</i>
<i>Day Shift</i>	91	6.50	2366	78%
<i>Evening Shift</i>	24	1.71	624	21%
<i>Overnight</i>	2	0.14	52	2%
<i>Total</i>	117	8.36	3042	

<i>Daylight</i>	101	7.21	2626	86%
<i>Darkness</i>	16	1.14	416	14%