

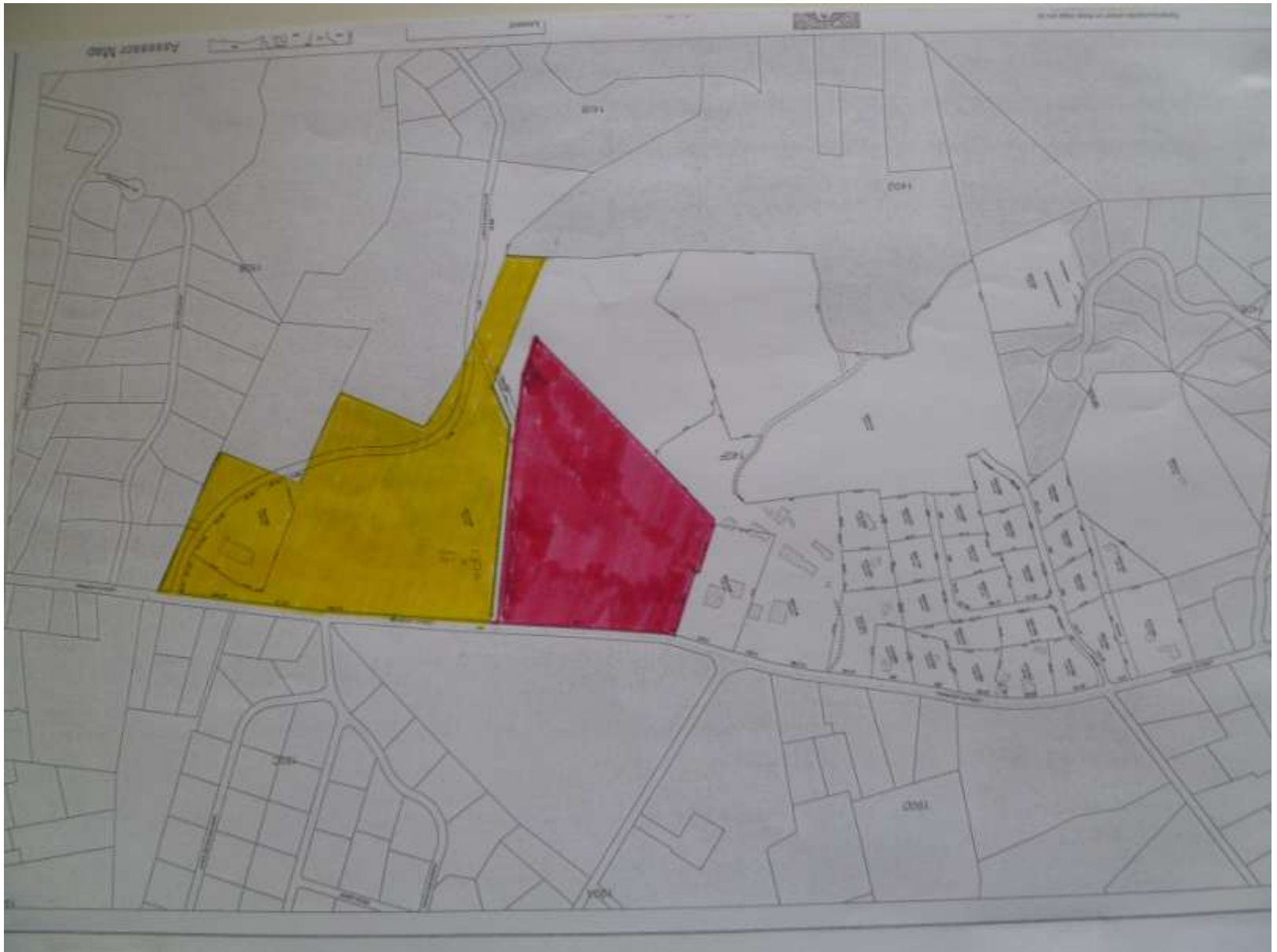
# Article 15

Cemetery Land

# Cemetery, circa 1920



## 1922 Expansion (in yellow)



## Current Mayflower Cemetery Area showing uses



Parcels taken and proposed to be taken by the Town (in red)







Areas of new land believed most useful for Burial Lots (in red)





[illegible]



[illegible]

# Summary

- Mayflower Cemetery is part of the oldest maintained cemetery system in the country
- As a result of efforts by many over the years, the Cemetery stands today as a history of the citizens of the Town and a place of tribute to those buried there
- Land conveyed in 1922 and still available for grave sites is limited and much of the current back land of the Cemetery is very difficult for and not suitable for development
- It is the Trustees belief, supported by the Selectmen, that now is the time to restore land to the Cemetery in place of that taken for other purposes and to allocate additional land for cemetery use for the future