

Wetlands Protection Overlay District Modification Plan North Street (023-010-001), Duxbury, MA

ARTICLE 40

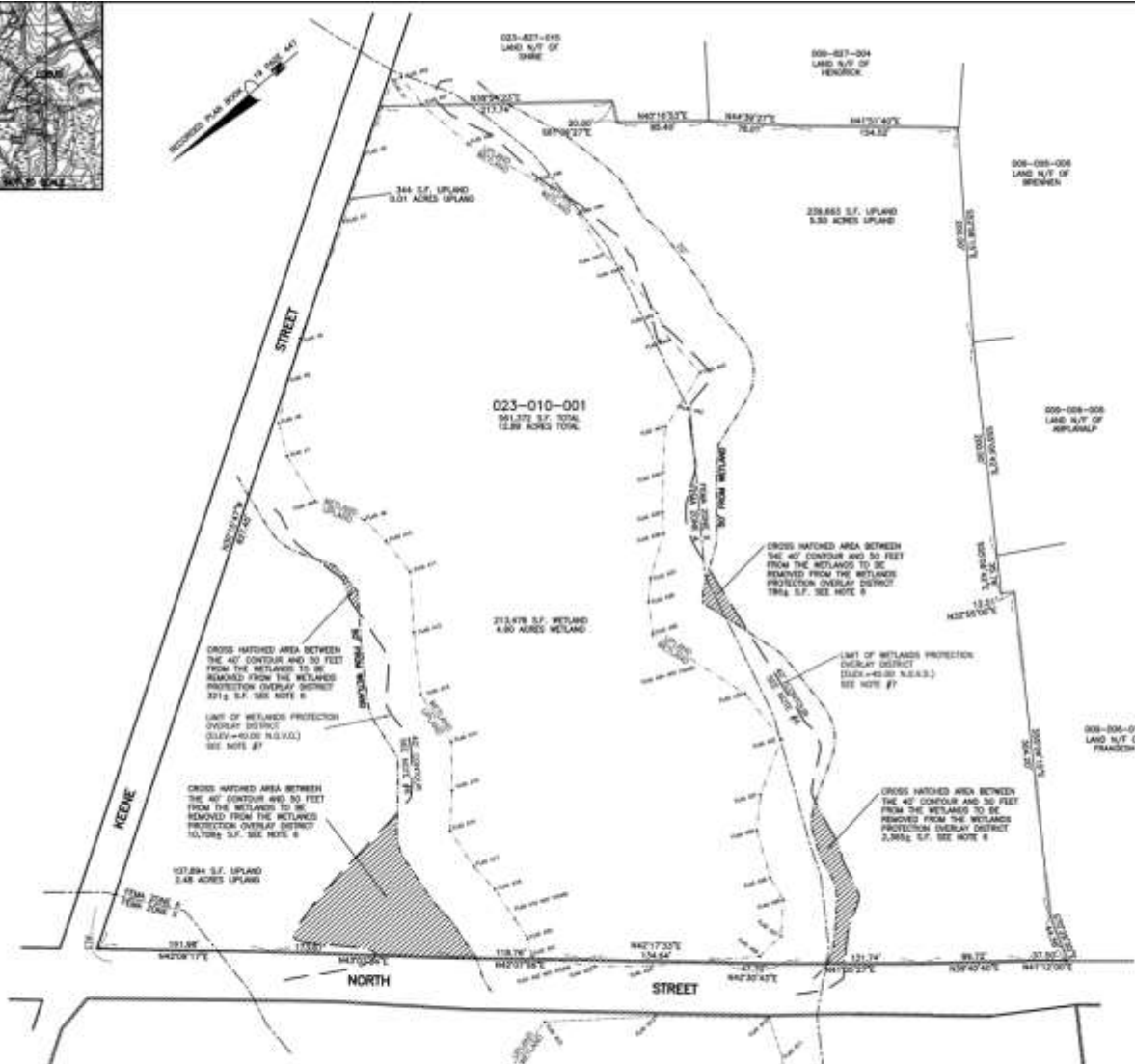
(March 16, 2015)

Seacoast Engineering Company

Paul Brogna, P.E.

(781) 934-8188

pab100100@aol.com

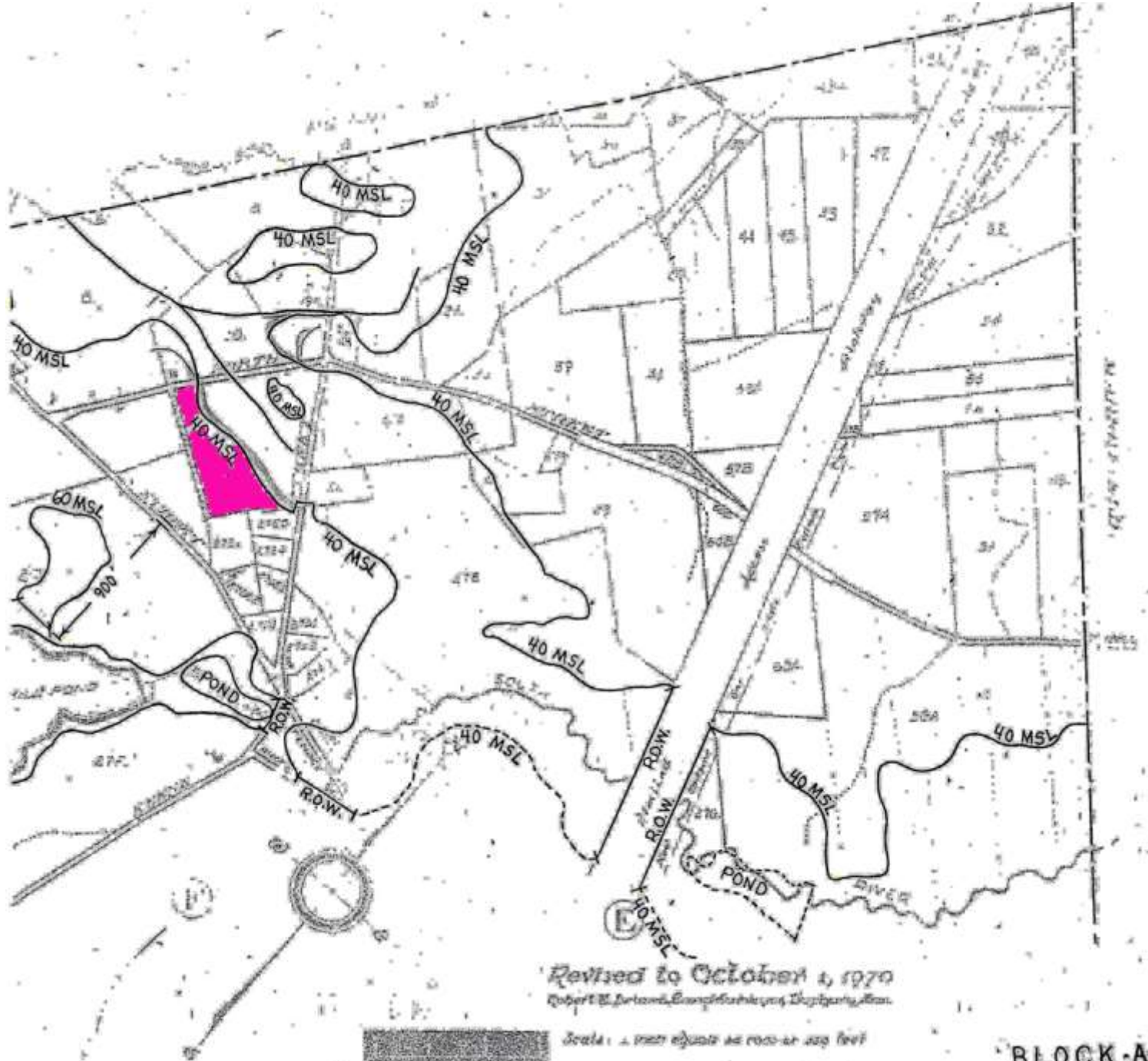


NOTE:

1. LOCUS FALLS MESH DUMBBY 200940 DISTRICTS NC AND WFOJ.
2. SEE REFERENCE BOOK 36480 PAGE 538.
3. PLAN REFERENCE BOOK 5 PAGE 860.
4. SOIL CLASSIFICATION IS PRIMARILY ULOMESTER SOILS.
5. METLAND LINE DELINEATED BY PAUL SHEA DATED OCT. 28, 2013.
6. IT IS PROPOSED THAT ALL LAND ON LOT 023-010-010 BETWEEN THE 40' CONTOUR AND 50' FROM METLANDS IS REMOVED FROM THE METLANDS PROTECTION SUBLAND DISTRICT.
7. THE 40' CONTOUR SURVEY ON THIS PLAN WAS INTERPOLATED FROM AVAILABLE FIELD SURVEY. ACTUAL LOCATION MAY VARY.



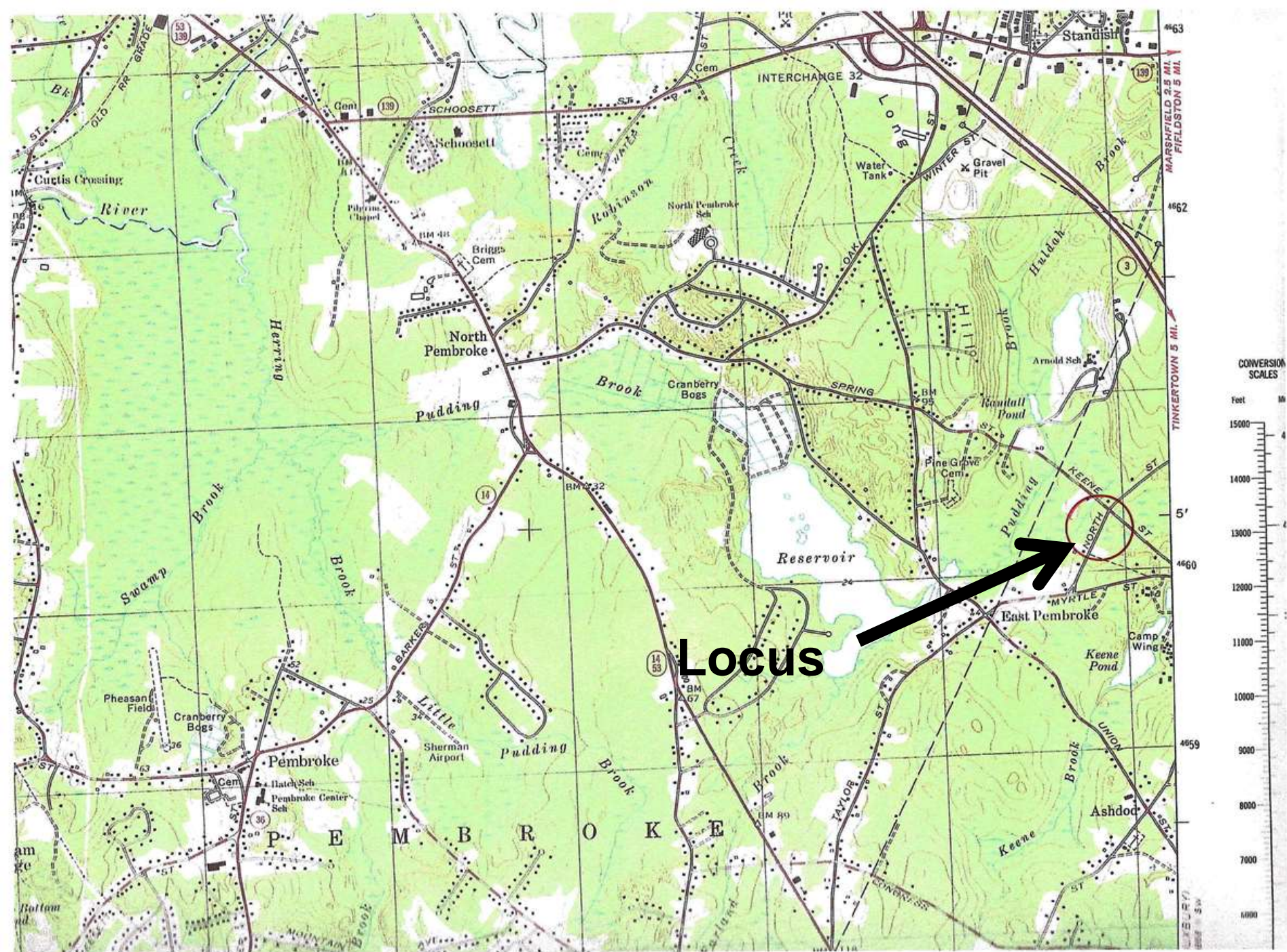
FEBRUARY 18, 2015



Revised to October 1, 1970
Robert E. Nelson, County Engineer, Department of Public Works

Scale: 1 inch equals 100 feet

BLOCK-A



MassDEP Online Map Viewer
Wetland and Wetland Change Areas Map



Map Tools

Overview Map Layers Legend Map Help Contact

of Environmental Protection

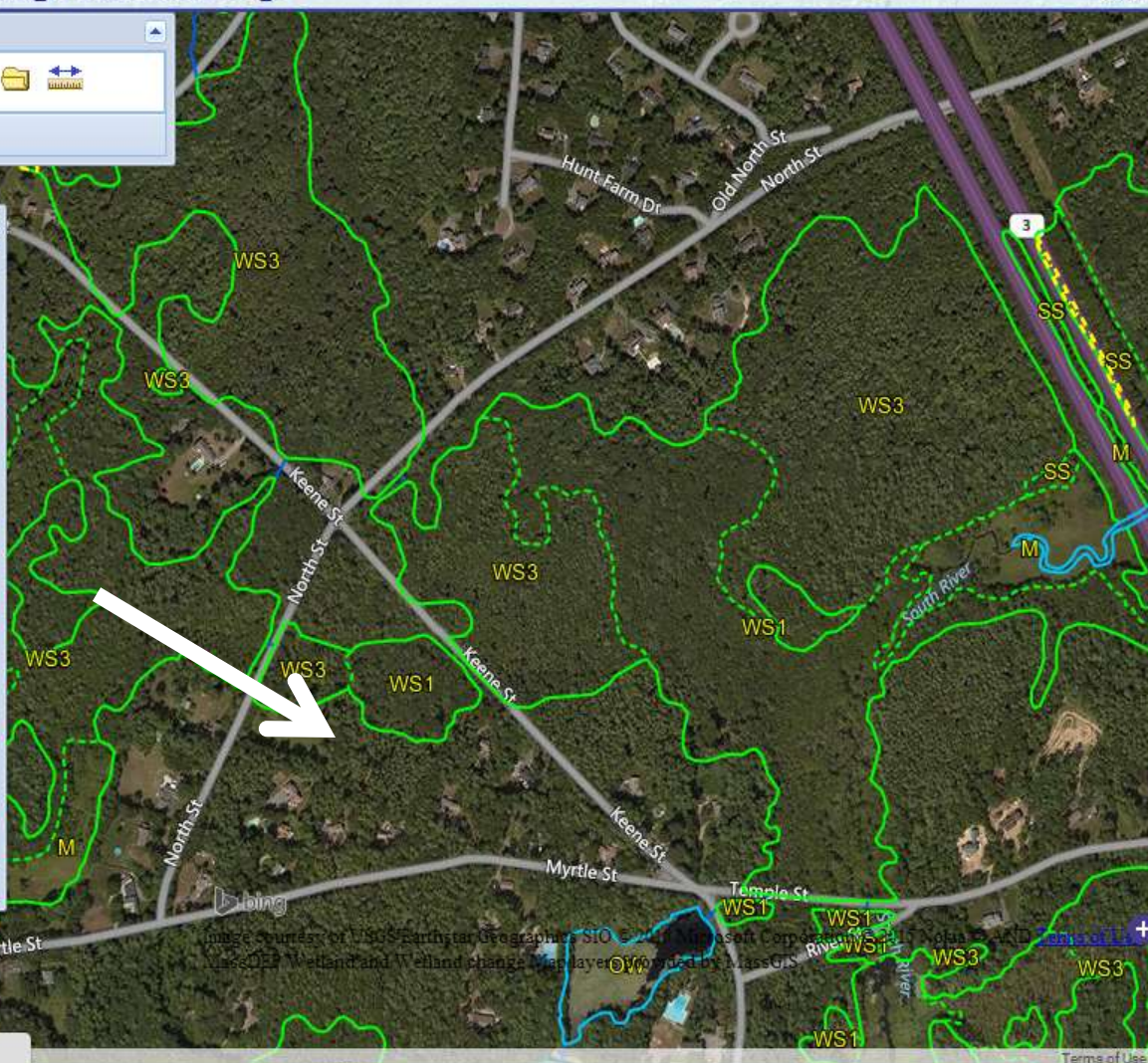
Map Legend

BA	COASTAL BANK BLUFF OR SEA CLIFF
BB	BARRIER BEACH SYSTEM
BE	COASTAL BEACH
BG	BOG
CB	CRANBERRY BOG
D	COASTAL DUNE
DM	DEEP MARSH
M	SHALLOW MARSH, MEADOW, OR FEN
OW	OPEN WATER
RS	ROCKY INTERTIDAL SHORE
SM	SALT MARSH
SS	SHRUB SWAMP
TF	TIDAL FLAT
WS1	WOODED SWAMP DECIDUOUS
WS2	WOODED SWAMP CONIFEROUS
WS3	WOODED SWAMP MIXED TREES
BB-BE	BARRIER BEACH-COASTAL BEACH
BB-BG	BARRIER BEACH-BOG
BB-D	BARRIER BEACH-COASTAL DUNE
BB-DM	BARRIER BEACH-DEEP MARSH
BB-M	BARRIER BEACH-MARSH
B-OW	BARRIER BEACH-OPEN WATER
BB-SS	BARRIER BEACH-SHRUB SWAMP

Map Help Contact Query Results

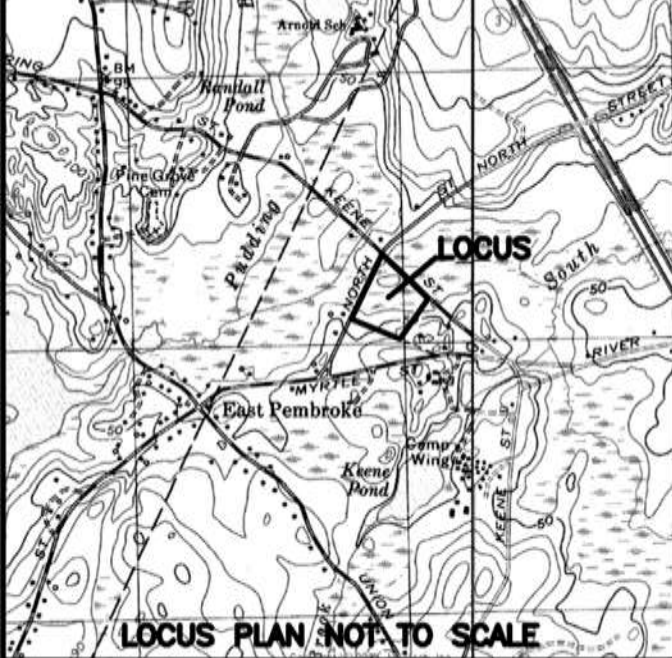
200 m
1000 ft
42°05'17.7"N, 70°44'54.8"W
(42.0882, -70.7486)

Waiting for giswebservices.massgis.state.ma.us...



Desktop

2:44 PM
Monday
3/16/2015



1st parcel)

023-010-001

WETLANDS PROTECTION OVERLAY DISTRICT
MODIFICATION PLAN

NORTH STREET

DUXBURY, MASS.

DRAWN FOR:

FRANK W. NESS JR. TRUST, MARJORIE L. NESS TRUST,
PAMELA NESS CROWLEY, TRUSTEE



401 PARSONAGE STREET
MARSHFIELD, MA 02050

781-834-9791

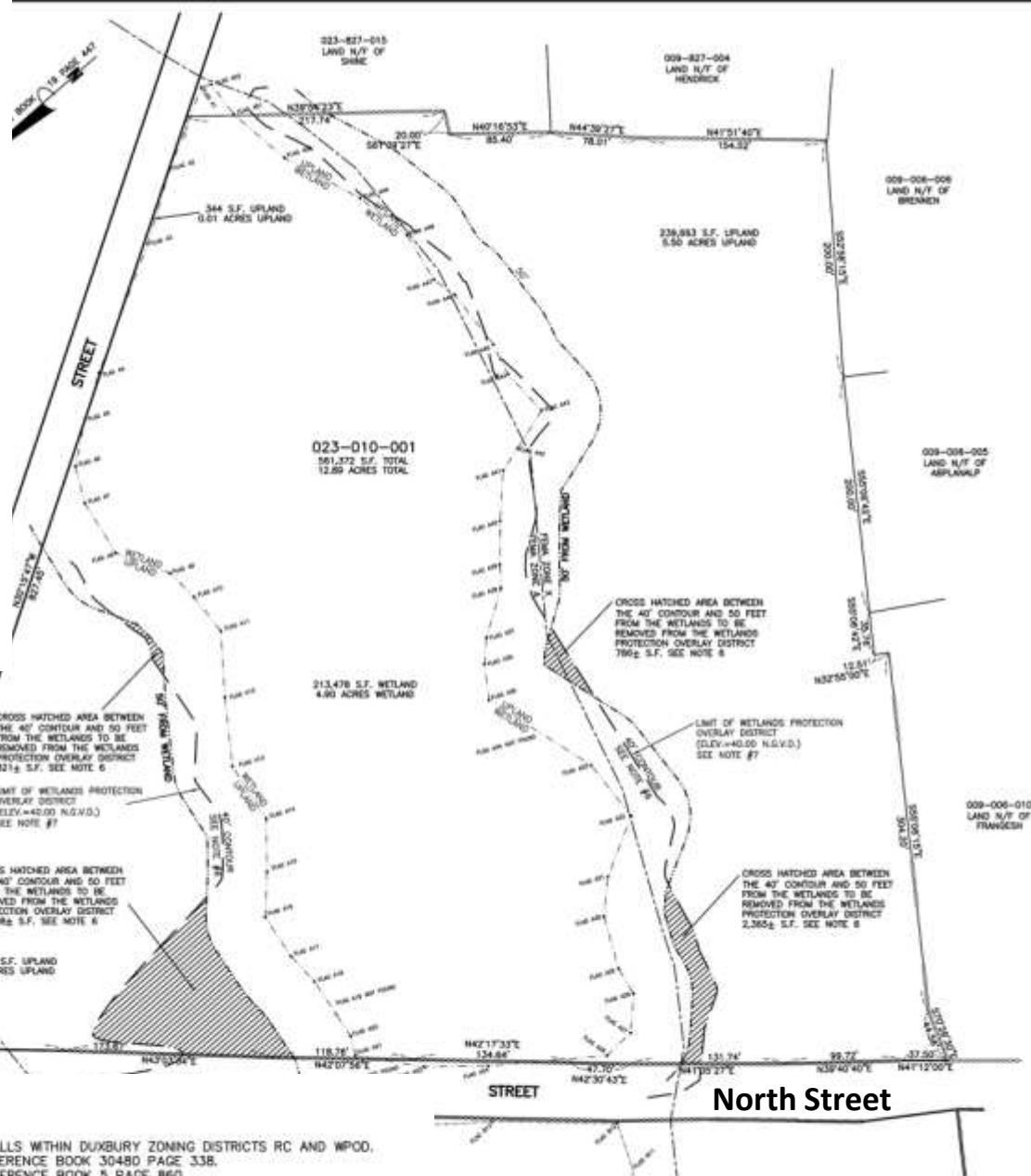
REVISED 2/25/15
REVISED 2/24/15

SCALE 1"=50'

FEBRUARY 18, 2015

NOTE:

1. LOCUS FALLS WITHIN DUXBURY ZONING DISTRICTS RC AND WPCD.
2. DEED REFERENCE BOOK 30480 PAGE 338.
3. PLAN REFERENCE BOOK 5 PAGE 860.
4. SOILS CLASSIFICATION IS PRIMARILY GLOUCESTER SOILS.
5. WETLAND LINE DELINEATED BY PAUL SHEA DATED OCT. 28, 2013.
6. IT IS PROPOSED THAT ALL LAND ON LOT 023-010-001 BETWEEN THE 40' CONTOUR AND 50' FROM WETLANDS BE REMOVED FROM THE WETLANDS PROTECTION OVERLAY DISTRICT.
7. THE 40' CONTOUR SHOWN ON THIS PLAN WAS INTERPOLATED FROM AVAILABLE FIELD SURVEY. ACTUAL LOCATION MAY VARY.





0 North St., (Wetlands)

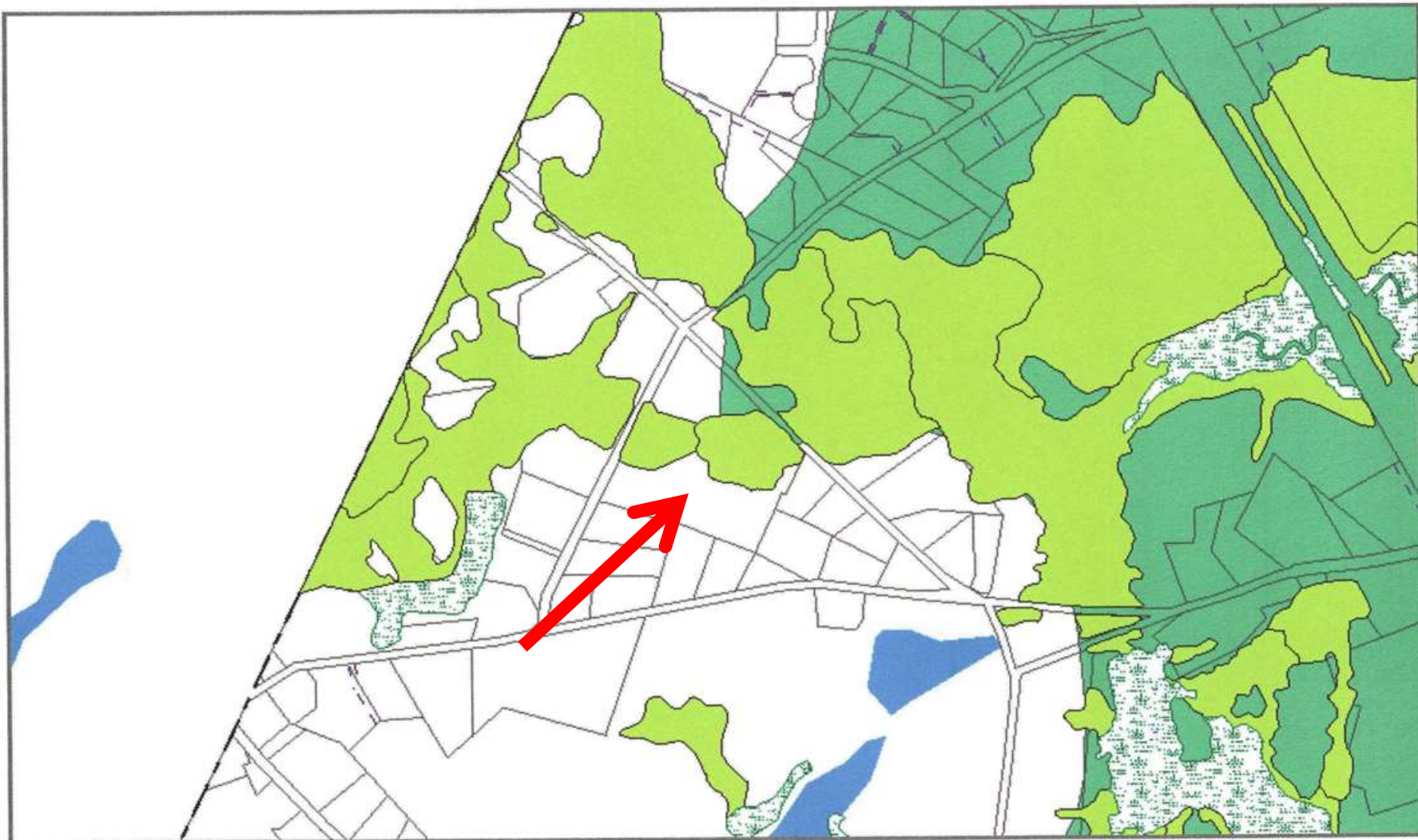
1 inch = 941 feet



Data and scale shown on this map are provided for planning and informational purposes only. The municipality and Vision Government Solutions are not responsible for any use for other purposes or misuse or misrepresentation of this information.



3/16/2015



0 North St., (Wetlands & APOD)

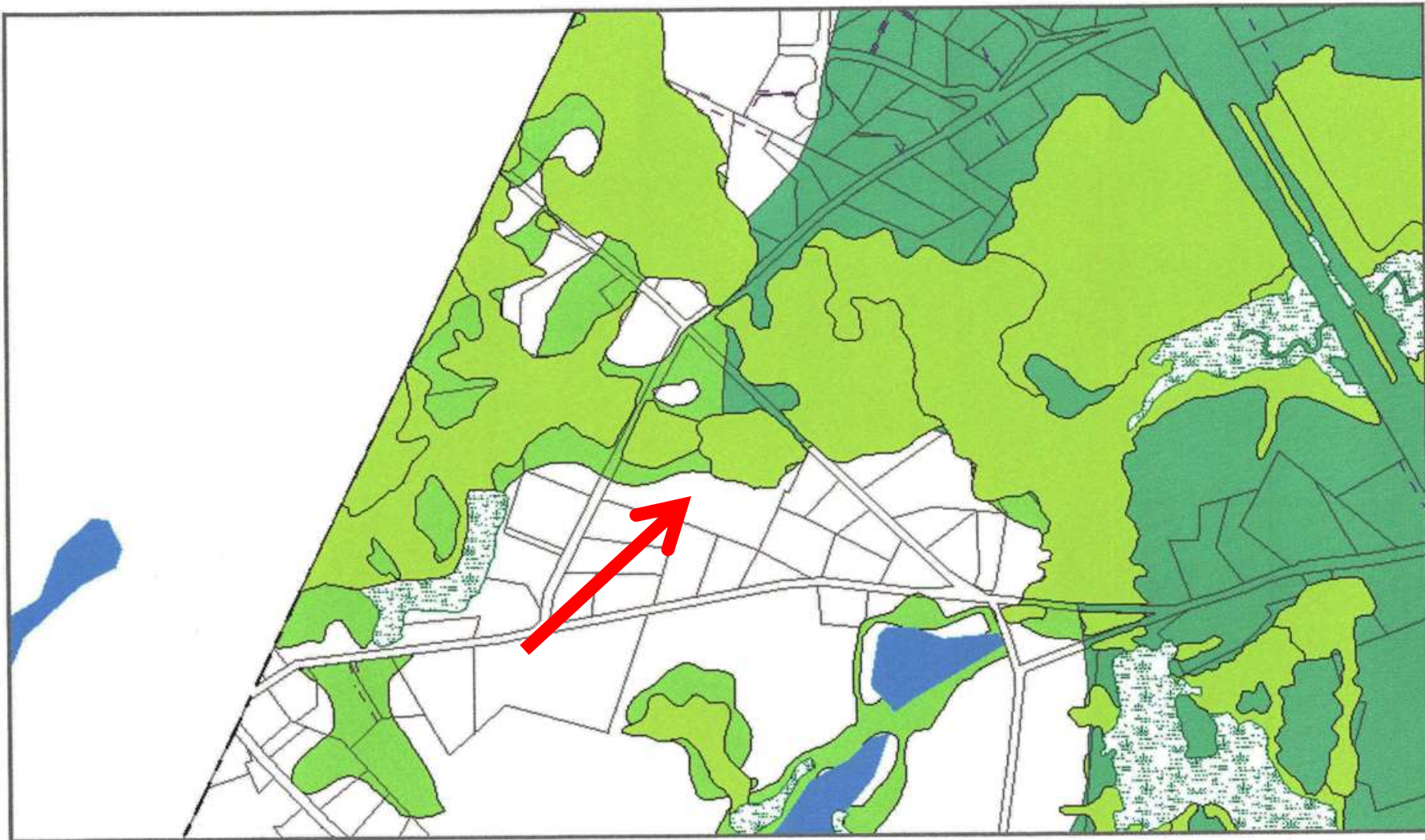
1 inch = 941 feet



Data and scale shown on this map are provided for planning and informational purposes only. The municipality and Vision Government Solutions are not responsible for any use for other purposes or misuse or misrepresentation of this information.



3/16/2015



0 North St., (Wetlands & APOD & WPOD)

1 inch = 941 feet



Data and scale shown on this map are provided for planning and informational purposes only. The municipality and Vision Government Solutions are not responsible for any use for other purposes or misuse or misrepresentation of this information.



3/16/2015

END
Article 40

THANK YOU FOR YOUR VOTE!