

Article 30

2009 International Building Code 8th ed. Mass. State Building Code

1012 Handrails

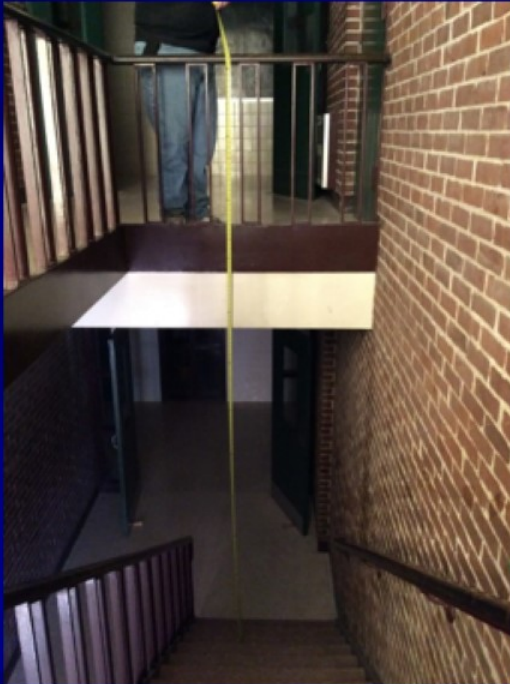
1012.2 Height. Handrail height, measured above stair tread nosings, or finish surface of ramp slope, shall be uniform, not less than 34 inches and not more than 38 inches.

1013 Guards

1013.2 Height. Required guards shall not be less than 42 inches high, measured vertically above adjacent walking surfaces, adjacent fixed seating or the line connecting the leading edges of the treads.

DHS – stair near 214

36" rail



DHS Main Lobby – 36" rail/14' above floor

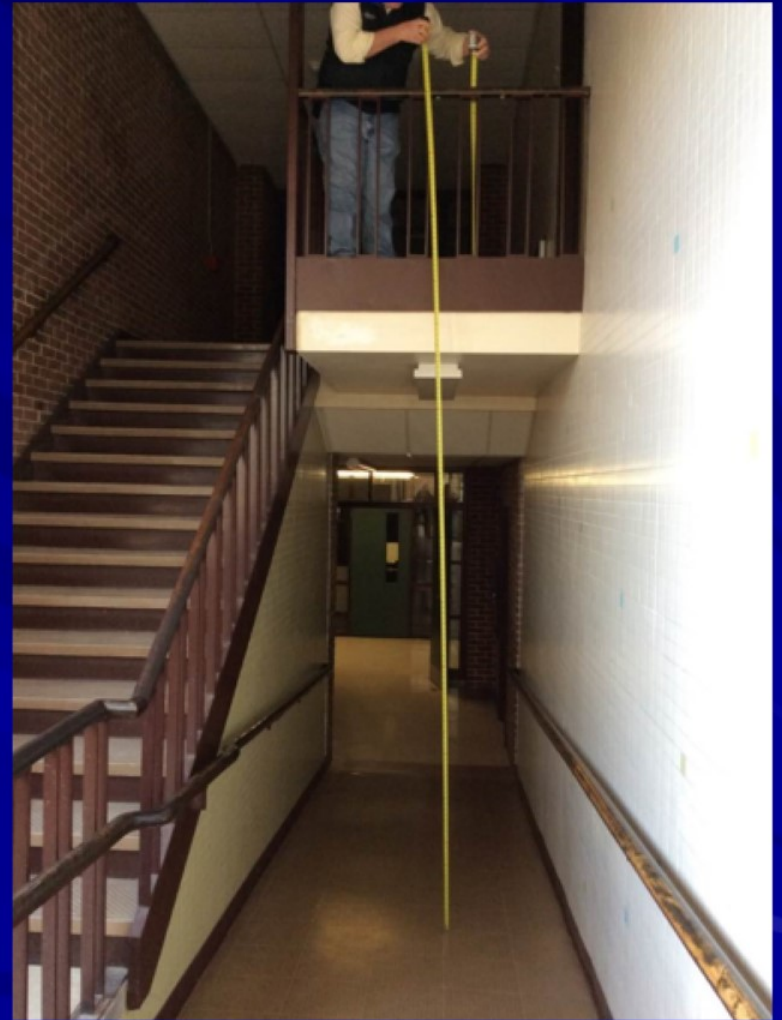


DHS - two stairs

36" rails, 13.5' height



DHS Back stair
36'' rail
13'-2'' height



DMS – Library
42” rail
15’ height
difference



DMS

35" high, 8" wide wall
15' height difference



**DMS rear stair
41.5" guard,
8" wide cap
15.5' height**

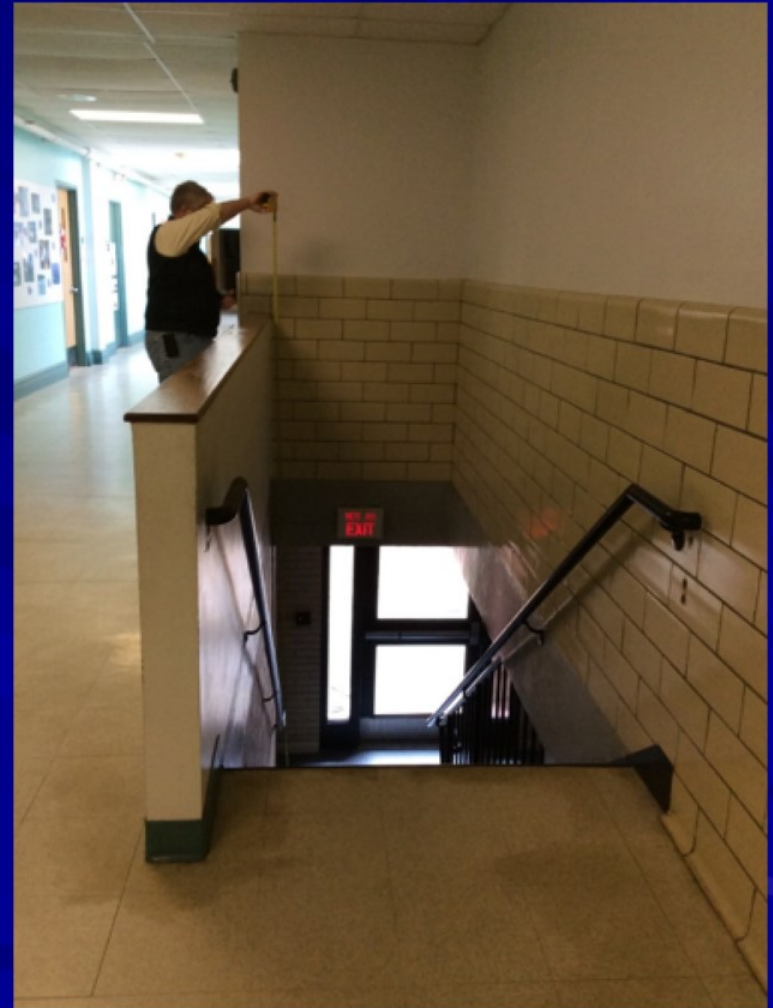


PAC
42" guard
26.5' height

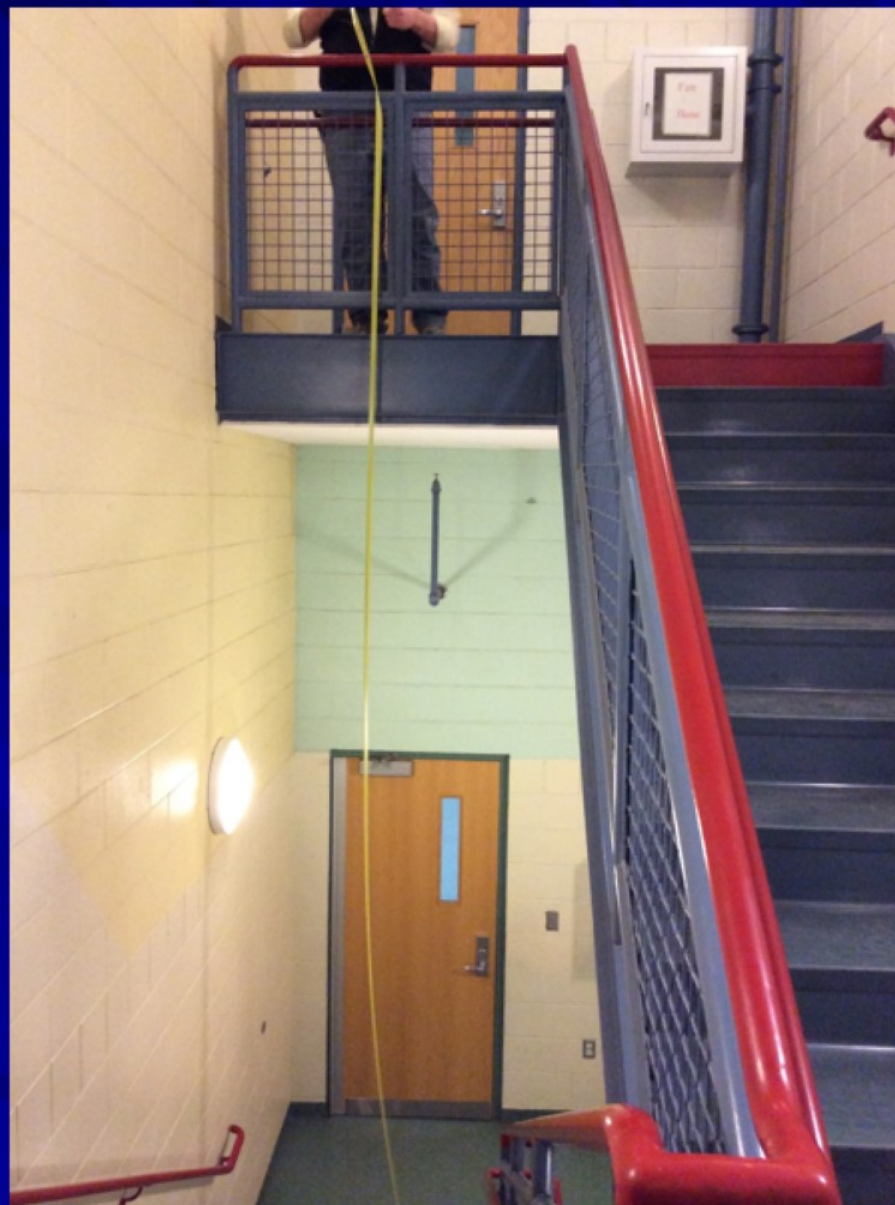




**Alden
Elementary
42" rail
8" wide cap
12'-2" height**



DMS addition 42" guard 15'-2" height







HANOVER HIGH SCHOOL

OLIVER AMES HIGH SCHOOL





WHITMAN HANSON HIGH SCHOOL



PLYMOUTH NORTH HIGH SCHOOL



NORWOOD HIGH SCHOOL





